

The Newsletter of  
the  
East Midlands Orienteering Association

February / March 2004



**EMEWS EDITOR:**

Mike Gardner  
3 Gatcombe Close  
Oakwood  
Derby  
DE21 2PZ

Email: [mikegardvo@aol.com](mailto:mikegardvo@aol.com)

---

## EMEWS

---

### Odd Man Out!

Thanks to Roger Edwards for pointing this out.

In the last 8 C4 events, to the middle of January, in EMOA which is the odd one out?  
Answer at the bottom of page 3.

### Chairman's Spot – John Woodall

As I write this the snow has given way to rain, so the event this weekend will be worth going to. The only weather I don't like for Orienteering is snow – you never know which set of footprints to follow!

We are now well into the season and I, no doubt like most of you, now have a full list of events covering each weekend through to the Summer. BOC gets close, 20 March, and then soon after is JK. As you all are aware we, EMOA, have agreed to run Day 2 of this year's JK. All is in hand and our reps on the JK Committee, Ernie Williams and Chris Phillips, have attended the meetings in the Lake District and have everything agreed (I think). All that is needed now is for the East Midlands clubs to produce the manpower (in this PC world should I say personpower?) to cover all the tasks allotted to each club. Please help us by

giving your name as a helper to your club co-ordinator.

At the last BOF Council meeting on 17 January two important decisions were made; First the Strategic Plan was approved and, probably of more immediate importance to the average orienteer, the new BOF Structure was agreed and is to be implemented forthwith. Both are explained in more detail elsewhere in this EMEWS but I feel they are a step in the right direction with the new structure making the governing of the Federation more simple and responsive to our needs - at least I hope so.

Well that's all for now. Looking back over what I have written I wonder whether I should rename this item "Chairman's Ramblings"

John Woodall

---000---

### EMOA Night League

There have been no events in the Night league in the last 2 months. I will provide the final Night League results in the next EMEWS. The future events are:

February 7<sup>th</sup>            LEI    Beacon Hill

February 21<sup>st</sup>        NOC   Haywood Oaks

and don't forget the British Night Champs at Crich Chase on 28<sup>th</sup> February.

### "Odd One Out"

Stanton Moor (26<sup>th</sup> Nov). The other 7 events all were on areas that began with the letter "B" – Burrough Hill (July 20<sup>th</sup>), Burbage (21<sup>st</sup> Sept), Bagworth (12<sup>th</sup> Oct), Byron's Walk (26<sup>th</sup> Oct), Bourne Woods (30<sup>th</sup> Nov), Bestwood (21<sup>st</sup> Dec) and also in amongst these was the downgraded Bottom Moor. The first official level 4 event in 2004 is Blidworth Short Races followed by the Budby badge event. Unfortunately we then moved to Fineshade and Shining Cliff.

## **EMOA Committee Meeting Report – January 26th 2004**

**EMOA Champs Trophies** – A total of 4 trophies appear to have been missing for some time. W10, M12, M60 and M75. It was agreed that the committee should look in to getting these replaced as soon as possible with shields and have this years winner's names engraved on them ready. It was also agreed to look in to producing a certificate to be given out as a permanent memento (it was felt that the younger age groups particularly liked having these).

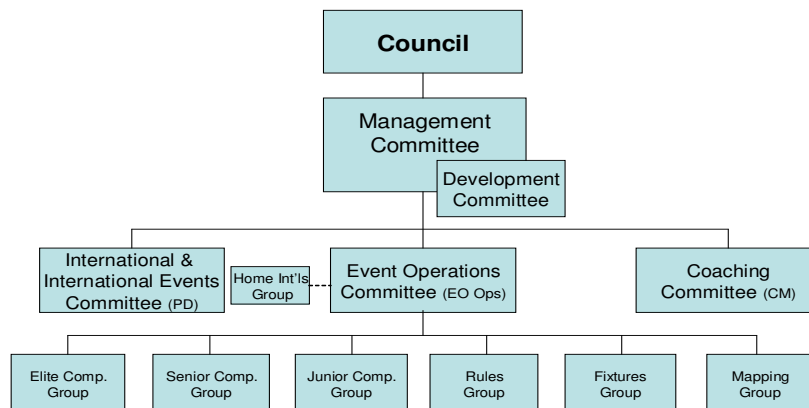
**Fixtures** – DVO, LEI and NOC have all bid for C3 fixtures in 2006. DVO have also proposed hosting the British Schools Score Champs in 2005 and are requesting a National Event in 2007.

**“O” in the Commonwealth Games** – There is a strong push to get orienteering in the next Commonwealth Games in Melbourne, Australia in 2006.

**BOF AGM**-This will be held at the JK on 10<sup>th</sup> April at 5:15pm

**BOF Structure** – The BOF restructuring has been agreed in principle.

### **1. Proposed BOF Structure**



In the new structure, regional representatives can be nominated for each of the committees. In some cases, such as Elite Competitions and International, these will simply be correspondence reps. EMOA needs to nominate our reps. In particular we need volunteers to step forward for International, Elite Competitions, Senior Competitions and Junior Competitions. Please volunteer to help out your region. Names to Bob Alderson, the EMOA Secretary.

It is proposed that the first duties of the committees will be to detail their roles and responsibilities in consultation with and coordinated by their higher level committees for final approval by Council. Once these documents have been accepted, they will be published on the web and held in the Governance Manual document along the duties of individual post holders. A draft outline for each committee is available from any of the EMOA Committee or Club Reps.

**BOF Strategic Plan** – A strategic 5 year plan has also been drawn up and reviewed by Council. The plan has three themes running through it, inclusion, sustainable development and measuring & communicating success.

---

## EMEWS

---

One of the major goals is to appoint a regional development officer (RDO) for each association. I have attempted to provide some of the major goals and activities that are outlined in the plan below. These are intended to be a summary and I've paraphrased to get things into the magazine. Please contact one of the EMOA committee if you want to see a copy of the full document.

### General Development

- a. Better communications – Get away from reactive practice and establish a more proactive approach. Do not over react to complaints but use Focus, the website and other means of communications to encourage a more inclusive, constructive dialogue between all elements of the Federation
- b. Greater representation by Clubs and members in the Federation's activities – Getting Clubs on side is the key to greater inclusion. Establish a biannual Club Delegate conference
- c. Work towards a simplified membership system which includes all Club Members being BOF members and allows specified outside groups to become BOF members and be affiliated to clubs.
- d. Associated Sports – Develop closer links with SkiO, MTBO and particularly TrailO to provide an equity version of the sport.
- e. Good Practice – BOF to Institute a 'Manual of Good Practice' for clubs and Associations to record current procedures. This could be done on a section of the website to make it available to all.

### Schools–Club Links

- a. RDOs to target local schools in conjunction with Clubs in line with Government school sports coordination policy.
- b. BOF to define a formal 'School-Club link'. All Clubs to establish at least three formal School-Club links. Encourage school children to take part in club events. Pupil/Parent/Club social events
- c. Build on the benefits of the BSOA being a constituent element of BOF
- d. Clubs and RDOs to work with Schools Sports Coordinators. Regional and District competitions
- e. Make Teacher Leader and Level 2 Courses more available and accessible through RDOs. Establish targets for courses
- f. Use 'Awards for All' and other initiatives to map school grounds, provide basic equipment and necessary training and support. Establish targets for schools to be mapped.
- g. Establish a workable award recognition system for outstanding contributions by teachers, schools, pupils and BSOA members.
- h. Good Practice - RDOs to identify and promote best practice

### Club Development

- a. Clubs to build on the ability to put on a wide variety of events including events for newcomers and events with a social element, especially for juniors.
- b. Innovative local advertisement of all events
- c. RDOs to support selected Clubs to achieve Clubmark accreditation.
- d. Build on links with school and other junior groups (scout/guides etc) to attract parents to events or to work as volunteers.
- e. Develop links with Community Sports Coaches/Development Officers through RDOs
- f. Clubs and RDOs to promote and record the development and use of permanent orienteering courses
- g. Organise and facilitate transport sharing schemes to get more people to events.
- h. Each Club, with possible help and advice from the RDOs, to establish a simple development plan reflecting the local circumstances
- i. Good Practice - RDOs to identify and promote best practice

### Coaching

- a. Clubs, RDOs and Coaching Committee to encourage more people into coaching at differing levels to suit individuals e.g. put on courses in different areas
- b. Clubs to encourage members at all levels, but particularly juniors and novice adults, to make more use of coaching facilities
- c. Coaching Committee to work with International Committee to encourage Clubs and Associations to participate in the Talent identification scheme
- d. RDOs to be or become club coaches and to sell their services to clubs
- e. Good Practice - RDOs to identify and promote good practice

### Fixtures and Events

---

## EMEWS

---

- a. BOF to encourage and provide good practice guidelines for Clubs and Associations to put on attractive and varied events both large and small. Also to encourage Clubs to look at events holistically to include the events with local publicity and a social gathering.
- b. Revise Major Events Guidelines into procedures to include all aspects of BOF sponsored events.
- c. Volunteers – Events need to be simplified to make more effective use of volunteer time e.g. Reduction in the number of courses and age groups. BOF to provide guidelines for some major events to be run by paid officials
- d. BOF to reappraise the award and ranking system provide an up to date incentive scheme linked to events of all standards
- e. Support Home Nations in establishing an appropriate range of representative competitions
- f. Good Practice - BOF to identify and promote good practice

### International

- a. International Committee to set targets for winning medals in elite competitions
- b. Clubs to ensure more involvement of World Class athletes at club level, publicity and prize giving as appropriate.
- c. Clubs to set up events where elite athletes can be recognised, such as coaching evenings.
- d. Introduce an International Event strategy.
- e. International committee to work with Fixtures to ensure that the domestic calendar supports the athletes' season progression
- f. Talent development is a long term issue; we must provide appropriate opportunities for the athletes and appropriate training for their coaches

### Marketing

- a. BOF to encourage all Clubs to have PR Officers and provide material information and facilities to help clubs to promote the sport locally
- b. Research – BOF to research and react in the following areas using funded outside assistance.
  - Members Benefits and membership retention
  - Membership demography and effective membership recruitment
  - Effective local event advertising
- c. Ensure Sponsorship for BOF, the World Class squad and all major events
- d. Introduce BOF Road Shows to demonstrate to Clubs the activities of BOF
- e. Use major outdoor activities to promote the image of orienteering in Britain
- f. To encourage, at all levels of orienteering, a simplification of jargon so that the sport is understandable to all particularly to newcomers

### Outside Agencies

- a. BOF to establish closer links with national uniformed youth groups such as Scouts, Guides and Cadets and provide reciprocal membership benefits
- b. BOF to establish closer links with national and local organisations such as YHA, outdoor centres and other commercial outdoor adventure companies
- c. RDOs and clubs to work with Community Sports Coaches/Development Officers to establish links with targeted Local Authority education and health organisations
- d. Provide more permanent orienteering courses (POC's) and market in conjunction with the above organisations. Publish a booklet of registered courses and guidelines and suggestions as to their use by different groups

### Universities and Teacher Training

- a. RDOs to identify and establish Club – University links
- b. BOF to promote university leagues and encourage Clubs to host university events and provide cheaper student entries.
- c. RDOs and Clubs to promote joint coaching/training evenings and attend 'freshers fairs'
- d. RDOs and Clubs to identify teacher training provision and be involved with initial training and accreditation schemes, including integration within the curriculum.
- e. BOF to set up a database of juniors that go onto university to encourage the sport in the college as well as enabling them to make contact with local clubs
- f. Good Practice - RDOs to identify and promote good practice

### Volunteers

- a. Events require a large volunteer input. All efforts should be concentrated on recruiting and retaining volunteers in this area. Paid staff should carry out the administration. At Association level this could be additional work for the RDOs

---

## EMEWS

---

- b. BOF to establish a 'Volunteer Charter' to establish terms of reference for volunteers, particularly committee members, without increasing bureaucracy. This could be done with outside assistance using a grant.
- c. BOF to set realistic volunteer targets for each function at Club, Association and Federation level
- d. BOF to encourage and provide simple guidelines for Clubs to use low key events for training event officials as part of a development and succession plan
- e. BOF should investigate the possibility of paying Volunteers some royalty as well as expenses for some work such as major events and mapping
- f. BOF to instigate an award system to recognise Volunteers and praise their endeavours and feed into more general local and national schemes.

### Funding

- a. BOF to secure funding from Sports Councils for at least four years in advance for all programmes
- b. BOF to secure funding from Sports Councils for new RDOs one day per week
- c. BOF to persuade Government that orienteering can help deliver its health targets as well as having an important educational role
- d. BOF to provide a coordinating role for funding throughout the Federation
- e. BOF to find new sources or increase current income to avoid reliance on Government/Sports Council funding. e.g. making all Club members be BOF members, increasing event levies, increased sponsorship.

### Governance

- a. BOF to establish a sustainable format for the AGM which will attract sufficient members to ensure a proper representation of the Federation.
- b. Establish **with Clubs** a Club delegate system to ensure full representation at Conferences.
- c. Ensure appropriate representation of Associations and Club consultation through the Federation's structure of committees and working groups.
- d. Embrace the Government modernisation plans for sports governing bodies to ensure that the Federation is best placed to take full advantage of whatever funds become available.

**Junior Championships** – There has been quite a bit of discussion on the separation of BOF Junior and Senior Championships. BOF has issued a statement. In general we hope to run championships for all age groups together unless date, terrain, or other circumstances occur in which case the elite or junior age classes may be held separately. BOF has no intention of separating them out in general.

However, in 2005 the junior championships event is separate because the BOF championships is in May in South West England, which is likely to be a long trip in the middle of exams. It is hoped that the junior championships will be held alongside the World Cup event on May 1<sup>st</sup> in Southern England.

**Drug Testing** – Last year there were 24 drug tests of elite competitors in the UK. All were negative.

### Level 2 (Instructor) Coaching Award

Anyone who has been on the old style (pre 2004) BOF Instructor course has until June 2004 to complete their assessment. Please contact Hilary Palmer (Tel 0115 9820651) if you would like to be assessed.

New courses to become Level 2 Coaches are now being run under 1st for Sport qualifications and after June 2004 the old syllabus will not be used.

Renewal of Level 2 coach awards will continue every 3 years in the usual way. BOF writes to people when their award needs renewing. If you let your award lapse you may have to be re-assessed on the new syllabus.

Hilary Palmer - British Orienteering Federation, Development Manager

### **East Midland Champions**

The East Midlands Champs were held at NOC's Robin Hood Trophy event on 11<sup>th</sup> January.  
The winners of each class were:

W10	Joy Hodkinson	NOC	M10	Daniel Parsons	LEI
W12	Jenny Evans	NOC	M12	Bertie Tapp Scotting	LEI
W14	Mairead Rocke	LEI	M14	Peter Hodkinson	NOC
W16	Erin Malley	DVO	M16	John Rocke	LEI
W18	Rosemary Hodkinson	NOC	M18	Andrew Llewellyn	NOC
W20	Kate Johnson	DVO	M20	Matthew Dickinson	DVO
W21	Helen Palmer	NOC	M21	John Duckworth	DVO
W35	Sal Chaffey	DVO	M35	Anthony Donaldson	NOC
W40	Janet Evans	NOC	M40	Andrew Jackson	DVO
W45	Val Johnson	DVO	M45	Mick Lucking	NOC
W50	Elizabeth Rocke	LEI	M50	Michael Napier	NOC
W55	Hilary Palmer	NOC	M55	Stephen Wright	NOC
W60	Pauline Ward	DVO	M60	Rex Bleakman	DVO
W65	Shirley Moir	LEI	M65	Tony Buckland	NOC
W70	No winner		M70	Donald Moir	LEI

## **A Brief History of Orienteering – Part 2**

Taken primarily from the BOF web pages

Orienteering came to Britain in the 1950s. In 1953 John Disley competed in an orienteering event at the Swedish National Sports Centre at Boson, while touring Sweden as a member of the British athletics team. For all his running ability - he was an Olympic medallist at the 1952 games - he was easily beaten by some 20 women P.E. students, but decided that this was a natural sport for the British who loved running, wild places and maps. In 1955 he organised two events in the Bryn Egan forest in Snowdonia, opposite the National Outdoor Activity Centre at Plas y Brenin. Some 30 to 35 people took part in what were probably the first orienteering events held in the UK, though because they had to make do with inch to the mile maps they were not particularly successful.

Possibly the first public mention of the sport in Britain was in an article in the [Observer](#) newspaper in 1957, written by Chris Brasher who had been gold medallist in the 1956 Olympic Games. Brasher began:

I have just taken part, for the first time, in one of the best sports in the world. It is hard to know what to call it. The Norwegians call it 'orientation'...

This was a night event, with a mass start, held near Trondheim. Brasher's article produced a letter from the Norwegian Embassy in London, pointing out that 'orientation' was not as completely unknown in the UK as Brasher implied: a Norwegian instructor had given a course 'in this typically Norwegian sport' at 'one of the most famous public schools in the country' (unfortunately unidentified). Brasher replied that several other readers had written to him to say that orientation (or orienteering) competitions had already been held in this country, including one of 20 miles and 9000 foot of ascent in the Lake District (the 1957 Lake District Mountain Trial), and a street event in Greenock, Scotland. Later that year Brasher himself took part in an event organised by the Nottinghamshire Association of Boys Clubs.

This early activity was sporadic and uncoordinated. Peter Palmer, later to be a major figure in the development of British orienteering, remembers I took part in my first orienteering competition on Jesus Meadows, Cambridge, in November 1958.

Two Swedish students persuaded the University Cross-Country Club to look for coloured biscuit tins in a fog-bound fen landscape with the help of an OS inch-to-the-mile map, grid references, Silva compasses, and helpful descriptions like 'the wood corner south of the village church'.

A major step towards organised orienteering came in 1959 when Baron Lagerfelt of Stockholm, an accomplished orienteer in his day and fired with a missionary zeal to spread the sport throughout the world, turned his sights on Britain. He organised a demonstration event in Nottingham and wrote to the Scottish Tourist Board. His letter eventually ended up on the desk of Charles Wilde, a Development Officer in what was then the Scottish Council of Physical Recreation, and on December 15th 1960 Wilde called a meeting to discuss Lagerfelt's proposal to introduce the sport of orienteering to Scotland through staging a well publicised demonstration by teams of expert Swedish orienteers, to be held in June 1961, at some suitable place in Scotland.



Eleven people, representing youth groups, education, the armed forces and the Forestry Commission attended this meeting. The Swedish Orienteering Council decided to postpone its visit until 1962 but the Advisory Committee went ahead and organised its own demonstration event on the Penicuik Estate on Sunday April 16th 1961, using members of Edinburgh Southern Harriers. This became the first orienteering event in Scotland and comprised two courses, a short trial run of about two miles to give the athletes the feel of orienteering, followed by a 5½ mile competition. The winner was a woman, Agnes Wright, in 58.32, seven minutes ahead of Brian Jamieson who went on to become a British international and a course planner at the 1976 World Championships. Baron Lagerfelt himself finished one second behind Jamieson. The Swedish team visited Scotland the following year, and its demonstration race at Dunkeld on June 23rd was followed by Open Men's, Junior Men's and Women's races. These count as the first Scottish Championships, and also included an international competition between Scotland, England, Germany and Sweden - won, of course, by the Swedes. June 24th 1962, the day of the Open Men's/International race, was also the day of the first Annual General Meeting of the [Scottish Orienteering Association](#). It was attended by 24 people representing 18 organisations, with apologies from 19 individuals representing a further 14 organisations. The first Scottish O club was Edinburgh University in late 1964, followed by Strathclyde University and Edinburgh Southern in early 1965.

Meanwhile, following the 1957 Lake District Mountain Trial, members of the Preston Mountain Rescue Team led by Gerry Charnley and Ken Turner were experimenting with map and compass exercises on the Pennine fells. An orienteering event was held at Whitewell near Clitheroe in 1963, and on December 4th 1964, the first English club, [South Ribble Orienteering Club](#), was formed, closely followed by [Pendle Forest Orienteers](#). SROC represented England in an international competition in France in July 1965.

Further south, the advent of cheap black and white photocopying persuaded John Disley to try again using 1:25,000 O.S. maps, and in 1964 he organised a series of fortnightly events in Surrey which attracted local teachers and children as well as now-familiar names such as Peter Palmer and Chris James. To gain media interest Disley also invited his athletic friends, including Roger Bannister, Chris Brasher, Gordon Pirie and Martin Hyman. Articles in national newspapers and Sunday supplements quickly followed, and the word 'orienteering' became more familiar to the British public.

# EMEWS

## EMOA Galoppen

So far the East Midlands galloppen has encompassed events at Bagworth (LEI), Byron's Walk (NOC), Stanton Moor (DVO), Bourne Woods (LOG) and Bestwood (NOC). The following is a list of the remainder of the East Midlands galloppen events for 2003/2004:

Jan 18 <sup>th</sup>	LEI	Fineshade	Mar 7 <sup>th</sup>	LEI	Rough Park
Jan 25 <sup>th</sup>	DVO	Shining Cliff	Mar 28 <sup>th</sup>	DVO	Linacre
Feb 8 <sup>th</sup>	LEI	Beacon Hill	Apr 18 <sup>th</sup>	LOG	Stapleford
Feb 22 <sup>nd</sup>	LOG	Twynford	Apr 25 <sup>th</sup>	DVO	Chatworth
Feb 29 <sup>th</sup>	NOC	Sherwood Pines	May 8 <sup>th</sup>	LEI	Swithland

Prizegiving at the Grace Dieu badge event on June 6<sup>th</sup> 2004

Below are detailed the top 10 in each grouping so far. Events by column 1= Bagworth, 2=Byron's Walk, 3=Stanton Moor, 4=Bourne Wood & 5=Bestwood.

### White Course – Boys / Men

Forename	Surname	Club	Class	1.	2.	3.	4	5	Best 6 Scores	Position
<b>William</b>	<b>Parkinson</b>	<b>NOC</b>	<b>M7</b>		<b>1000</b>		<b>1000</b>	<b>1000</b>	<b>3000</b>	<b>1<sup>st</sup></b>
<b>Aleksi</b>	<b>Davidson</b>	<b>LEI</b>	<b>M9</b>	<b>1000</b>		<b>1000</b>	<b>699</b>		<b>2699</b>	<b>2<sup>nd</sup></b>
<b>Daniel</b>	<b>Rawsthorne</b>	<b>LEI</b>	<b>M5</b>	<b>839</b>			<b>909</b>		<b>1748</b>	<b>3<sup>rd</sup></b>
Nathan	Lawson	LEI	M6	882			766		1648	4 <sup>th</sup>
Matthew	Drew	NOC	M10	690	824				1514	5 <sup>th</sup>
Euan	Tebbutt	LEI	M5	564		751			1315	6 <sup>th</sup>
Sean	Martin	NOC	M8	369				843	1212	7 <sup>th</sup>
Miles	Plaskett	LEI	M9		350	600			950	8 <sup>th</sup>
Oliver	Williams	NOC	M6					861	861	9 <sup>th</sup>
Khem	Sattaur	DVO	M10			822			822	10 <sup>th</sup>

### White Course – Girls / Women

<b>Kathryn</b>	<b>Drew</b>	<b>NOC</b>	<b>W10</b>	<b>960</b>	<b>1000</b>			<b>1000</b>	<b>2960</b>	<b>1<sup>st</sup></b>
<b>Harriet</b>	<b>Lawson</b>	<b>LEI</b>	<b>W8</b>	<b>1000</b>			<b>715</b>	<b>933</b>	<b>2648</b>	<b>2<sup>nd</sup></b>
<b>Victoria</b>	<b>Littlewood</b>	<b>NOC</b>	<b>W10</b>		<b>962</b>		<b>1000</b>		<b>1962</b>	<b>3<sup>rd</sup></b>
Claudia	Smith	NOC	W8			1000			1000	4 <sup>th</sup>
Ellie	Williams	NOC	W12					788	788	5 <sup>th</sup>
Amy	Kimberley	DVO	W10					710	710	6 <sup>th</sup>
Hannah	Horsewill	NOC	W7		564				564	7 <sup>th</sup>
Francesca	Littlewood	NOC	W4				522		522	8 <sup>th</sup>
Nicola	Jackson	DVO	W7	458					458	9 <sup>th</sup>
Adele	Goodwin	NOC	W12					430	430	10 <sup>th</sup>

### Yellow Course – Boys / Men

<b>Daniel</b>	<b>Davidson</b>	<b>LEI</b>	<b>M9</b>	<b>986</b>		<b>1000</b>	<b>1000</b>		<b>2986</b>	<b>1<sup>st</sup></b>
<b>Matthew</b>	<b>Burton</b>	<b>NOC</b>	<b>M12</b>		<b>897</b>			<b>751</b>	<b>1648</b>	<b>2<sup>nd</sup></b>
<b>Jamie</b>	<b>Martin</b>	<b>NOC</b>	<b>M10</b>	<b>851</b>				<b>597</b>	<b>1448</b>	<b>3<sup>rd</sup></b>
<b>Daniel</b>	<b>Parsons</b>	<b>LEI</b>	<b>M9</b>	<b>1000</b>					<b>1000</b>	<b>4<sup>th</sup>=</b>
<b>James</b>	<b>Taylor</b>	<b>NHS</b>	<b>M12</b>		<b>1000</b>				<b>1000</b>	<b>4<sup>th</sup>=</b>
Oliver	Williams	NOC	M10					1000	1000	4 <sup>th</sup> =
Joshua	Turnbull	NOC	M12					949	949	7 <sup>th</sup>
Andy	Beadle	NOC	M14					834	834	8 <sup>th</sup>
James	Mayley	LOG	M12		651				651	9 <sup>th</sup>
Patrick	Brown	NOC	M10					561	561	10 <sup>th</sup>

### Yellow Course – Girls / Women

<b>Elizabeth</b>	<b>Parkinson</b>	<b>NOC</b>	<b>W10</b>		<b>1000</b>		<b>1000</b>	<b>1000</b>	<b>3000</b>	<b>1<sup>st</sup></b>
<b>Joy</b>	<b>Hodkinson</b>	<b>NOC</b>	<b>W10</b>			<b>1000</b>		<b>608</b>	<b>1608</b>	<b>2<sup>nd</sup></b>
<b>Alison</b>	<b>Percy</b>	<b>DVO</b>	<b>W8</b>		<b>471</b>	<b>446</b>		<b>362</b>	<b>1279</b>	<b>3<sup>rd</sup></b>
Rebecca	Mead	DVO	W10			749			749	4 <sup>th</sup>
Ellie	Williams	NOC	W12					617	617	5 <sup>th</sup>
Leanne	Durrant	LOG	W9				525		525	6 <sup>th</sup>
Laura	Wilson	DVO	W10			455			455	7 <sup>th</sup>
Ashleigh	King	NOC	W12		410				410	8 <sup>th</sup>

### Orange Course – Boys / Men

Forename	Surname	Club	Class	1	2	3	4	5	Best 6	Position
----------	---------	------	-------	---	---	---	---	---	--------	----------

# EMEWS

								Scores		
Bertie	TappScotting	NOC	M12		1000		1000	942	2942	1 <sup>st</sup>
Thomas	Wright	DVO	M12		877	881		904	2662	2 <sup>nd</sup>
Simon	Wright	DVO	M12		749	1000		759	2508	3 <sup>rd</sup>
Julius	Percy	DVO	M10		928	792		771	2491	4 <sup>th</sup>
Matthew	Hallam	NOC	M8	1000		921			1921	5 <sup>th</sup>
Paul	Mimshall	NOC	M14					1000	1000	6 <sup>th</sup>
Thomas	Forster-Smith	OAK	M16				968		968	7 <sup>th</sup>
David	Jenkinson	LEI	M40	895					895	8 <sup>th</sup>
Mark	Mimshall	NHS	M16					885	885	9 <sup>th</sup>
James	Taylor	NHS	M12					737	737	10 <sup>th</sup>

## Orange Course – Girls / Women

Catherine	Sellars	DVO	W21			1000		1000	1 <sup>st</sup>
Irene	Marriott	LEI	W50	1000				1000	1 <sup>st</sup>
	Tucker	DVO	W13		1000			1000	1 <sup>st</sup>
Suzanne	Chapman	NOC	W10			1000		1000	1 <sup>st</sup>
Kathryn	Thompson	LEI	W55	886				886	5 <sup>th</sup>
Cliona	Joyce	NUOC	W21	500				500	6 <sup>th</sup>

## Light Green Men

<b>Dave</b>	<b>Tongue</b>	<b>NOC</b>	<b>M35</b>		<b>819</b>		<b>777</b>	<b>798</b>	<b>2394</b>	<b>1<sup>st</sup></b>
<b>Matthew</b>	<b>Wallace</b>	<b>NOC</b>	<b>M14</b>	<b>820</b>	<b>805</b>				<b>1625</b>	<b>2<sup>nd</sup></b>
<b>David</b>	<b>Disney</b>	<b>DVO</b>	<b>M45</b>	<b>691</b>	<b>681</b>				<b>1372</b>	<b>3<sup>rd</sup></b>
Alan	Jones	NOC	M70	537		808			1345	4 <sup>th</sup>
Richard	Pickworth	LOG	M55			783	498		1281	5 <sup>th</sup>
Mel	Clark	LOG	M45	584	667				1251	6 <sup>th</sup>
Barry	Mawby	NOC	M60		1000				1000	7 <sup>th</sup>
Ian	Hodson	DVO	M21			1000			1000	7 <sup>th</sup>
John	Thompson	LEI	M55	1000					1000	7 <sup>th</sup>
Martin	Wheeler	LOG	M45				1000		1000	7 <sup>th</sup>
Daniel	Kimberley	DVO	M16					1000	1000	7 <sup>th</sup>

## Light Green Women

<b>Mary</b>	<b>Mills</b>	<b>NOC</b>	<b>W50</b>	<b>809</b>	<b>992</b>		<b>1000</b>	<b>747</b>	<b>3548</b>	<b>1<sup>st</sup></b>
<b>Geraldine</b>	<b>Davis</b>	<b>LEI</b>	<b>W55</b>	<b>665</b>	<b>725</b>		<b>820</b>	<b>711</b>	<b>2921</b>	<b>2<sup>nd</sup></b>
<b>Ros</b>	<b>Bourne</b>	<b>DVO</b>	<b>W60</b>	<b>1000</b>				<b>1000</b>	<b>2000</b>	<b>3<sup>rd</sup></b>
<b>Margaret</b>	<b>Buckland</b>	<b>NOC</b>	<b>W60</b>	<b>802</b>	<b>990</b>				<b>1792</b>	<b>4<sup>th</sup></b>
Norah	Jones	NOC	W70	744		797			1541	5 <sup>th</sup>
Shirley	Moir	LEI	W65	442				785	1227	6 <sup>th</sup>
Erin	Malley	DVO	W14		1000				1000	7 <sup>th</sup>
Kate	Johnson	DVO	W18			1000			1000	7 <sup>th</sup>
Jennifer	Cook	NOC	W50		987				987	9 <sup>th</sup>
Valerie	Gebbett	NOC	W65		920				920	10 <sup>th</sup>

## Green Men

<b>John</b>	<b>Woodall</b>	<b>NOC</b>	<b>M65</b>	<b>861</b>	<b>819</b>	<b>724</b>	<b>1000</b>	<b>747</b>	<b>4151</b>	<b>1<sup>st</sup></b>
<b>Dave</b>	<b>Skidmore</b>	<b>DVO</b>	<b>M55</b>	<b>953</b>	<b>901</b>	<b>768</b>		<b>726</b>	<b>3348</b>	<b>2<sup>nd</sup></b>
<b>Roger</b>	<b>Keeling</b>	<b>DVO</b>	<b>M60</b>	<b>827</b>	<b>715</b>	<b>678</b>		<b>684</b>	<b>2904</b>	<b>3<sup>rd</sup></b>
Vernon	Davis	LEI	M60	760	618		885	565	2828	4 <sup>th</sup>
Christopher	Mills	NOC	M15	827	677		684	623	2811	5 <sup>th</sup>
<b>David</b>	<b>Cooke</b>	<b>NOC</b>	<b>M55</b>	<b>1000</b>	<b>1000</b>	<b>758</b>			<b>2758</b>	<b>6<sup>th</sup></b>
Brian	Ward	DVO	M65	884	801	743			2428	7 <sup>th</sup>
Andrew	Tongue	NOC	M18		717		932	696	2345	8 <sup>th</sup>
Michael	Lindsay	DVO	M50	658	672	653			1983	9 <sup>th</sup>
Paul	Wright	DVO	M45		672	699		562	1933	10 <sup>th</sup>

## Green Women

Forename	Surname	Club	Class	1	2	3	4	5	Best 6 Scores	Position
<b>Ruth</b>	<b>Ellis</b>	<b>DVO</b>	<b>W50</b>	<b>718</b>	<b>978</b>	<b>740</b>		<b>678</b>	<b>3114</b>	<b>1<sup>st</sup></b>
<b>Pauline</b>	<b>Ward</b>	<b>DVO</b>	<b>W55</b>	<b>1000</b>	<b>980</b>	<b>1000</b>			<b>2980</b>	<b>2<sup>nd</sup></b>
<b>Rachel</b>	<b>Davis</b>	<b>DVO</b>	<b>W35</b>	<b>652</b>	<b>728</b>	<b>587</b>	<b>1000</b>		<b>2967</b>	<b>3<sup>rd</sup></b>
<b>Diane</b>	<b>Ford</b>	<b>LEI</b>	<b>W55</b>	<b>828</b>	<b>777</b>	<b>645</b>		<b>578</b>	<b>2828</b>	<b>4<sup>th</sup></b>
Ann	Armistead	DVO	W50		856	683		731	2270	5 <sup>th</sup>
Alison	Hayes	DVO	W40	602	752	733			2087	6 <sup>th</sup>
Christina	Wright	DVO	W45		669	637		563	1869	7 <sup>th</sup>
Jayne	Malley	DVO	W45		1000			805	1805	8 <sup>th</sup>
Silvia	Ruiz	LEI	W21	544	552	554			1650	9 <sup>th</sup>
Sue	Bicknell	LEI	W55			843		787	1630	10 <sup>th</sup>

# EMEWS

## Blue Men

<b>Liam</b>	<b>Harrington</b>	<b>LOG</b>	<b>M16</b>	<b>1000</b>	<b>974</b>	<b>830</b>	<b>1000</b>	<b>815</b>	<b>4619</b>	<b>1<sup>st</sup></b>
<b>Simon</b>	<b>Ford</b>	<b>LEI</b>	<b>M60</b>	<b>990</b>	<b>1000</b>	<b>852</b>		<b>921</b>	<b>3763</b>	<b>2<sup>nd</sup></b>
<b>Roger</b>	<b>Edwards</b>	<b>LEI</b>	<b>M50</b>	<b>917</b>	<b>744</b>	<b>901</b>		<b>736</b>	<b>3298</b>	<b>3<sup>rd</sup></b>
Andy	Hawkins	DVO	M55	852		829	743	827	3251	4 <sup>th</sup>
Tony	Buckland	NOC	M65	933		856		934	2723	5 <sup>th</sup>
Sean	Harrington	LOG	M45	557	529	492	611	420	2609	6 <sup>th</sup>
Roger	Williamson	LEI	M55		550	652	651	603	2456	7 <sup>th</sup>
Gary	Drew	NOC	M45		816	733		805	2354	8 <sup>th</sup>
Oscar	TappScotting	NOC	M16	805	877			654	2336	9 <sup>th</sup>
Peter	Leake	LEI	M60		766	644		768	2178	10 <sup>th</sup>

## Blue Women

<b>Ursula</b>	<b>Williamson</b>	<b>LEI</b>	<b>W40</b>		<b>723</b>		<b>789</b>	<b>630</b>	<b>2142</b>	<b>1<sup>st</sup></b>
<b>Sarah</b>	<b>O'Neil</b>	<b>NOC</b>	<b>W18</b>	<b>972</b>	<b>1000</b>				<b>1972</b>	<b>2<sup>nd</sup></b>
<b>Sian</b>	<b>Roberts</b>	<b>NOC</b>	<b>W18</b>	<b>961</b>	<b>900</b>				<b>1861</b>	<b>3<sup>rd</sup></b>
Margaret	Keeling	DVO	W55	1000	855				1855	4 <sup>th</sup>
H	Galloway	LOG	W50	951	900				1851	5 <sup>th</sup>
Jayne	Malley	DVO	W45	938		659			1597	6 <sup>th</sup>
Liz	Godfree	DVO	W55					1000	1000	7 <sup>th</sup> =
Rosemary	Hodkinson	NOC	W16			1000			1000	7 <sup>th</sup> =
H	Galloway	LOG	W50				1000		1000	7 <sup>th</sup> =
Jane	Booker	NOC	W45	993					993	10 <sup>th</sup>

## Brown Men

<b>David</b>	<b>Bray</b>	<b>LEI</b>	<b>M50</b>	<b>916</b>	<b>975</b>		<b>1000</b>		<b>2891</b>	<b>1<sup>st</sup></b>
<b>Chris</b>	<b>Bosley</b>	<b>LEI</b>	<b>M55</b>	<b>896</b>	<b>852</b>	<b>936</b>			<b>2684</b>	<b>2<sup>nd</sup></b>
<b>Ian</b>	<b>Wells</b>	<b>LEI</b>	<b>M50</b>	<b>892</b>	<b>819</b>		<b>936</b>		<b>2647</b>	<b>3<sup>rd</sup></b>
David	Gourley	LOG	M40	704		883	895		2482	4 <sup>th</sup>
Steven	Davidson	LEI	M40	683		783	830		2296	5 <sup>th</sup>
David	Lawson	LEI	M40	1000			973		1973	6 <sup>th</sup>
Andrew	Jackson	DVO	M40	869		941			1810	7 <sup>th</sup>
Chris	Williamson	LEI	M16		1000		771		1771	8 <sup>th</sup>
John	Malley	DVO	M45	824		922			1746	9 <sup>th</sup>
Keith	Picksley	NOC	M65	747	902				1649	10 <sup>th</sup>

## Brown Women

<b>Sal</b>	<b>Chaffey</b>	<b>DVO</b>	<b>W35</b>			<b>1000</b>		<b>1000</b>	<b>1<sup>st</sup></b>
<b>Sue</b>	<b>Russell</b>	<b>DVO</b>	<b>W40</b>			<b>744</b>		<b>744</b>	<b>2<sup>nd</sup></b>

## Electronic Punching ... and Mispunching!

The Event Standards Committee has considered two appeals in the past year following disqualification of competitors whose punch at a control failed to register electronically where SI punching was being used. In both cases the appeals were made on the grounds that the competitors had been seen to punch at the control and, in both cases, it was clear that the control unit was functioning properly both before and after the competitor had punched. Both appeals were turned down and the disqualifications were upheld.

So competitors at events using electronic punching are advised to take care when they punch. If the SI system is being used, the control unit will bleep and the light on the control unit will flash. If the competitor's punch produces either of these signals, the punch will have registered on their e-card/dibber. If you are not absolutely sure that you have heard the bleep or seen the flash, go back and punch again as Jon Duncan did at his last control for the relay at the recent World Champs.

Particular care is needed at busy or noisy controls. Where there are several competitors at a control with a number of punching units, the bleep you hear may be from another competitor's punch. If there is background noise, such as the last control where there may be spectators cheering you on, you might not hear the bleep at all. In these circumstances, it is best to look for the light, rather than simply relying on the bleep.

The responsibility to punch correctly is firmly the competitor's. The relevant part in the rules follows in italics:

6.5.2 "The control card, electronic or otherwise, must clearly show that all controls have been visited. ***A competitor with a control punch missing or unidentifiable shall be disqualified unless it can be established with certainty that the punch missing or unidentifiable is not the competitor's fault*** and that the competitor visited the control....

Those of you who have bought the new faster SI-card should be aware that even with that it is possible to punch too fast for the card to record a punch. It is not worth trying to gain a fraction of a second and risk disqualification.

The first and fastest part of the SI punching process is when the SI unit reads the card. The longest time is taken to write the data into the card. So even if you punch too fast and don't get the data written to your card, the unit will almost certainly have read the card number and recorded your visit. However, it is not allowed for that data to be used to reinstate the competitor; if it were, we'd never get the results out until all units had been retrieved from the forest and interrogated. The new I OF rules make this completely explicit with the following wording: '20.7 ...If a competitor punches too fast and fails to receive the feedback signals, the card will not contain the punch and the competitor must be disqualified (even though the control unit may have recorded the competitor's card number)'.

## Fixtures

This fixture list is intended to list all major events in the UK, and all East Midlands events. It includes all the information available to me about the event at the time of going to press. Unless otherwise stated, District events offer entry on the day (EOD) to a range of colour coded (C4) course with start times from 10:30 to 12:30. Local events (C5) will only have a limited range of courses. Regional and National events (C3 & C2) provide a range of age related courses and are normally entered in advance using a Standard Entry Form (SEF); entry on the day (EOD) will usually be limited and more expensive. Most will offer a limited number of colour-coded courses for EOD. Cheques payable to organising clubs given at beginning of details, if not specified.

The OS map reference is either the car park or point from which the event will be signposted. The list is based on BOF registration, but events are sometimes cancelled. If you are uncertain of whether an event will be on, check with the organiser. The editor takes no responsibility for wasted journeys.

The East Midlands Orienteering Association has an answerphone which provides up to date information on events and also late cancellations. It is available on 0906 270 3419 at a cost of 25p a minute.

## February 2004

- |      |    |  |
|------|----|--|
| 8th  | YH | <b>SYO Regional Event.</b> Burbage, Sheffield. SK/273805.<br>C3 Organiser: Phil Haywood, 0114 236 3003. <a href="mailto:philhsyo@aol.com">philhsyo@aol.com</a><br>Entries: Doreen Best, 94 Ringstead Crescent, Crosspool, Sheffield, S10 5SJ, 0114 230 2621. <a href="mailto:doreenanglissbest@hotmail.com">doreenanglissbest@hotmail.com</a> CD: 19/01/04. £7.50/£3.00. Lim EOD +£1.50/£1.00. Chq: SYO. EPS-SI. String course. Lim CC courses up to Lt Green. Parking £1.00. Dogs on lead in car park only. <a href="http://www.southyorkshireorienteers.org.uk">www.southyorkshireorienteers.org.uk</a>  |
| 8th  | SC | <b>TVOC Regional Event, Chiltern Challenge.</b> Christmas Common, Watlington. SU/720910.<br>C3 Organiser: Colin Duckworth, 0118 972 2490. <a href="mailto:tvoc2004@yahoo.co.uk">tvoc2004@yahoo.co.uk</a><br>Entries: addressee TBA. CD: <i>unknown</i> . Fees TBA. String course. <a href="http://www.tvoc.org.uk">www.tvoc.org.uk</a>   |
| 8th  | WM | WCH District Event & joint event with Forestry Commission. Birches Valley, Rugeley. SK/017171.<br>C4 Philip Green & Barbara Heathcote, 01889 882436. <a href="mailto:philip.green@btinternet.com">philip.green@btinternet.com</a> £4.00/£2.00 + SI hire £1.00/50p. EPS-SI. String course. Dogs on lead. <a href="http://www.walton-chasers.co.uk">www.walton-chasers.co.uk</a>   |
| 8th  | EM | <b>LEI District Event and EMOA Galoppen.</b> Beacon Hill, Loughborough. SK/522148.<br>C4 Chris Phillips, 0116 255 0330. <a href="mailto:onecphillips@lineone.net">onecphillips@lineone.net</a> £3.50/£1.50. EPS-SI. String course. Parking £1.00. Dogs on lead. <a href="http://www.leioc.co.uk">www.leioc.co.uk</a> New Map by Don Moir   |
| 14th | EA | <b>WAOC Regional Night Event &amp; Midlands Night Championships.</b> High Ash, Mundford. TL/815967.<br>C3N Organiser: Tony Wadeson, 01438 740965. <a href="mailto:tony_wadeson@baa.com">tony_wadeson@baa.com</a><br>Entries: Ursula Oxburgh, 14 Bentley Road, Cambridge, CB2 2AW, 01223357199. <a href="mailto:u.oxburgh@esc.cam.ac.uk">u.oxburgh@esc.cam.ac.uk</a> CD: 02/02/04. £7.00/£3.00. Lim EOD + £1.00/50p. Chq: WAOC. EPS-SI. Dogs allowed on leads only. Starts 1800 - 1930 (tbc). Email entries welcomed - entries for original date will automatically be carried forward. Refunds available if needed. <a href="http://www.waoc.org.uk">www.waoc.org.uk</a> |
| 15th | EA | <b>SMOC Regional Event.</b> Salcey Forest, Northampton. SP/795512.<br>C3 Organiser: John Shaw, 01525 632919 (before 2100).<br>Entries: Helen Nisbet, 2 Hopkins Close, Milton Keynes Village, Milton Keynes, MK10 9AS. <a href="mailto:h.nisbet@virgin.net">h.nisbet@virgin.net</a> CD: 25/01/04. £8.00/£3.00. Lim EOD and late entries +£1.00. Chq: smoc. EPS-SI. String course. Lim CC courses. No dogs. <a href="http://www.silsonjoggers.org.uk/smocweb/">www.silsonjoggers.org.uk/smocweb/</a>   |
| 15th | SC | <b>BKO Regional Event, Concorde Chase.</b> Swinley Forest, Bracknell. SU/903670.<br>C3 Organiser: Eric Harper, 0118 948 2934.<br>Entries: Tim Booth, Concorde Chase 2004, 12 Jerry Moor Hill, Wokingham, Berkshire, RG40 4UG, 0118 973 4662. <a href="mailto:CC2004@bko.org.uk(enquiriesonly)">CC2004@bko.org.uk(enquiriesonly)</a> CD: 28/01/04. £7.50/£3.00 + £1.00  |



## EMEWS

- EMIT hire. Lim EOD +£1.00. Chq: BKO. EPS-Emit. String course. EOD CC courses - W, Y, O & LG - £4.00/£2.00. Dogs in car park only. [www.bko.org.uk](http://www.bko.org.uk)
- 15th YH HALO District Event. Willingham Woods, Market Rasen. TF/138885.  
C4 John Fulwood, 01507 466314. [johnfulwood@supanet.com](mailto:johnfulwood@supanet.com) £3.50/£1.50. EPS-SI. String course. Parking TBA. No dogs. [www.halo-orienteing.org.uk](http://www.halo-orienteing.org.uk)
- 15th WM HOC District Event. Dudmaston Hall, Bridgnorth. SO/746888.  
C4 Rollo Rumford, 01905 726967. [rollo.rumford@btinternet.com](mailto:rollo.rumford@btinternet.com) £4.00/£1.50 + £1.00 SI hire. EPS-SI. String course. Parking £1.00. No dogs. [www.harlequins.org.uk](http://www.harlequins.org.uk)
- 21st NE **NATO Regional Night Event & Northern Night Championships.** Dipton, Hexham. NY/960610.  
C3N Organiser: John Crosby, 0191 268 5449. [john@nsoa.freeseve.co.uk](mailto:john@nsoa.freeseve.co.uk)  
Entries: Andrew Nicoll, 47 Holywell Avenue, Whitley Bay, Tyne & Wear, NE26 3AQ, 0191 252 2383. [andrew@nicoll.co.uk](mailto:andrew@nicoll.co.uk) CD: 15/02/04. £4.00/£3.00. Lim EOD + £1.00/50p. Chq: NATO. EPS-SI. No dogs. Starts 1730-1830. [cgi.muddy.org/](http://cgi.muddy.org/)
- 21st EM **NOC Local Night Event.** Haywood Oaks, Mansfield. SK/611559.  
C5N Steve Martin, 0114 274 7437. [s.j.martin@sheffield.ac.uk](mailto:s.j.martin@sheffield.ac.uk). £2.00/£1.00. Dogs on lead.
- 22nd YH **EBOR Regional Event & Northern Championships.** Cawthorne & Keldy, Pickering. GR/771895.  
C3 Organiser: Cath Wilson, 01904 762541. [Catherine.Wilson@atkinsglobal.com](mailto:Catherine.Wilson@atkinsglobal.com)  
Entries: Steve Corrigan, 8 Brewery Cottages, New Lane, Huntingdon, York, YO32 9NQ, 01904 652546. [corrigans@freeuk.com](mailto:corrigans@freeuk.com) CD: 02/02/04. £7.50/£3.50. Family £20.00 (pre-entry only). Lim EOD +£1.50/£1.00. Chq: Eborienteers. EPS-SI. String course. Parking £1.00. Dogs allowed on lead in assembly area only. [www.eborienteers.org.uk](http://www.eborienteers.org.uk)
- 28th EM **DVO British Night Championships & UK Cup.** Crich Chase and The Hagg, Ripley. SK/355527.  
C2N Organiser and entries: Paul Wright, 4 Ripley Road, Riversdale, Ambergate, Belper, Derbyshire, DE56 2EU, 01773 856387. [cpstwright@supanet.com](mailto:cpstwright@supanet.com) CD: 14/02/04. £8.00/£3.00. Lim EOD +£2.00. Chq: DVO. EPS-SI. Starts from 1830. Parking £1.00. No dogs.
- 29th EM **JOK Chasing Sprint 2004 & UK Cup 2 & FCC 3, & NOC District Event.** Sherwood Pines, Mansfield. SK/612645.  
O3 Organiser: Caroline Catmur, 07971 661271. [caroline@catmur.co.uk](mailto:caroline@catmur.co.uk)  
Entries: addressee TBA. CD: *unknown*. £9.00/£6.00 (inc studs & unwaged). EPS-SI. Entries will be available via website shortly. Dogs on lead. [www.jok.org.uk](http://www.jok.org.uk)  
C4 Garry Drew, 0115 8406748. [garry.drew@ntlworld.com](mailto:garry.drew@ntlworld.com) £3.50/£1.50 + 50p SI hire. EPS-SI. String course. Dogs on lead.
- 29th EA **SOS Leap Year Regional Event.** Roman Valley & Donyland Wood, Colchester. TL/985209.  
C3 Organiser: Lyn West, 01206 322905. [lynwest.ghh@tesco.net](mailto:lynwest.ghh@tesco.net)  
Entries: Julia Robertson, 9 Moatfields, Fordham, Colchester, Essex, CO6 3PG, 01206 242283. [Badge@robertson-sos.freeseve.co.uk](mailto:Badge@robertson-sos.freeseve.co.uk) CD: 13/02/04. £7.00/£3.00, Family £18.00 +50p SI hire. Lim EOD while maps last +£2.00/£1.00. Chq: Essex Stragglers. EPS-SI. String course. EOD CC - White to Orange. [stragglers.info](http://stragglers.info)
- 29th WM OD District Event. Ragley Hall, Alcester. SO/555564.  
C4 Carolyn Marr, 01926 735390. [the.marrs@ntlworld.com](mailto:the.marrs@ntlworld.com) £5.00/£2.00. Parking £1.00. [www.octavian-droobers.org](http://www.octavian-droobers.org)

## March 2004

- 6th YH EBOR Mountain Bike Orienteering - 2-hour Score Event. Sawdon Village Hall, Wykeham, Scarborough. GR/941851. (*non BOF event*)  
MTBO Organiser and entries: Steve Willis, Denholme Back Street, Aldborough, Boroughbridge, York, YO51 9EX, 01423 323435. [steve@aldborough.freeseve.co.uk](mailto:steve@aldborough.freeseve.co.uk) CD: 01/03/04. £7.00/£3.50. 1-hour NC course - £3.50. Reductions for TCA, EBOR, CLOK members and own SI. Lim EOD. Chq: EborMBO. EPS-SI. Starts 1300 - 1345. Dogs on lead in car park and forest. [www.eborienteers.org.uk](http://www.eborienteers.org.uk) [www.trailquest.co.uk](http://www.trailquest.co.uk)
- 7th EM **LEI District Event.** Outwoods, Loughborough. SK/520170. (Note change of venue)

## EMEWS

- C4 Roger Williamson, 01509 412132. £3.50/£1.50. EPS-SI. String course. Parking £1.00 at Nanpantan Sports Ground. Dogs on lead. [www.leioc.co.uk](http://www.leioc.co.uk)
- 7th SE **DFOK Junior Regional Event & Senior District Event.** Shorne/Ashenbank, Gravesend. TQ/687701.
- C3 Organiser and entries: Andrew Evans, 4 Wickham Field, Pilgrims Way West, Otford, Kent, TN14 5JJ, 01959 522759. [andrew.sueevans@talk21.com](mailto:andrew.sueevans@talk21.com) CD: 25/02/04. £4.00/£3.00 (for Juns doing Colour Coded courses - £2.00) +£1.00 SI hire. Pre-entries taken up to 4/3/03 for all other courses (preferred) or entry on day. If entry by e-mail please also post cheque. EOD for Juns +£1.00. Late pre-entry after 25/2/04 for Juns +50p. Chq: DFOK. EPS-SI. White - Brown courses using master maps for all but Jun Badge courses. SE Answerphone 020 89486056. [www.dfok.co.uk](http://www.dfok.co.uk)
- 7th EA WAOE District Event & EAGAL. Warden Warren, Shefford. TL/145441.
- C4 Mike Capper, 01733 235202. [mike.capper@virgin.net](mailto:mike.capper@virgin.net) £4.00/£1.50. EPS-SI. Parking £1.00. Dogs on lead. [www.waoc.org.uk](http://www.waoc.org.uk)
- 13th EM **DVO Local Event.** West Park, Long Eaton. SK/475335.
- C5 Mike Godfree. [mike.godfree@bosinternet.com](mailto:mike.godfree@bosinternet.com) £2.00/£1.00. String course. Dogs on leads at all times. [www.dvo.org.uk](http://www.dvo.org.uk)
- 14th YH **SYO Compass Sport Cup 1st Round.** Cawthorne, Barnsley. SE/297097.
- O3 Organiser and entries: Charlie & Janet Adams, 15 Burnt Stones Grove, Sheffield, S10 5TU, 0114 230 4852. [Charlieadams@tinyworld.co.uk](mailto:Charlieadams@tinyworld.co.uk) CD: 23/02/04. £6.00/£3.00. No EOD. Chq: SYO. EPS-SI. Entry to this event is by pre-entry via competing clubs. No individual entries. EOD non-competitive W & Y courses. Parking £1.00. No dogs. [www.southyorkshireorienteers.org.uk](http://www.southyorkshireorienteers.org.uk)
- 14th WM **WCH Compass Sport Cup - 1st Round.** Cannock Chase, Rugeley. GR/038162.
- O3 Ian Jones, 01785 251682. £5.00/£2.00 + SI hire £1.00/50p. EPS-SI. Parking £1.00. Dogs on lead. [www.walton-chasers.co.uk](http://www.walton-chasers.co.uk)
- 14th EA **EAOA Compass Sport Cup 1st Round.** Warren Wood, Thetford. TL/837848.
- O3X Organiser: Caroline Louth, 01223 246145. [caroline@louths.org.uk](mailto:caroline@louths.org.uk)  
Entries: Roger Stenson, 58 Mount Pleasant, Norwich, NR2 2DQ, 01603 507442. [r.stenson@ntlworld.com](mailto:r.stenson@ntlworld.com) CD: 29/02/04. £6.00/£2.00. No EOD. Chq: EAOA. EPS-SI. Dogs on lead. Closed event for CSC entries plus members of non-entering EA Clubs in the East Anglia Region. [homepage.ntlworld.com/roger.stenson2/CSC2004/](http://homepage.ntlworld.com/roger.stenson2/CSC2004/)
- 20th- NE **BRITISH ORIENTEERING CHAMPIONSHIPS & UK CUP & FCC**
- 21st C1 **20th - BRITISH ORIENTEERING CHAMPIONSHIPS & UK CUP & FCC.** Simonside, Rothbury. NZ/035998.
- C3 **21st - Regional Event.** Simonside, Rothbury. NZ 035998.  
Co-ordinator: John Crosby, 0191 268 5449. [john@nsoa.freeseve.co.uk](mailto:john@nsoa.freeseve.co.uk)  
Entries: Andrew Nicoll, BOC2004, 47 Holywell Avenue, Whitley Bay, Tyne & Wear, NE26 3AQ, 0191 252 2383. [andrew@nicoll.co.uk](mailto:andrew@nicoll.co.uk) CD: 20/02/04. Fees TBA (see website for full details). 21st - £7.00/£3.50. Lim EOD 21st only +£1.00/50p. Chq: BOC 04. EPS-SI. String course. Lim CC courses on both days. Parking £1.00 each day. Dogs in car park and assembly only. [www.muddy.org/boc2004](http://www.muddy.org/boc2004)
- 28th YH **HALO Regional Event.** Londesborough Park, Market Weighton. SE/875465.
- C3 Organiser: Neil Harvatt, 01302 772911.  
Entries: Brian Ward, 12, Southcote Close, Bacchus Lane, South Cave, E.Yorks, HU15 2BQ, 01430 421343. [brian.ward@mfi.co.uk](mailto:brian.ward@mfi.co.uk) CD: 15/03/04. £6.50/£3.00. Lim EOD + £1.00/£1.00. Chq: HALO. EPS-SI. Lim CC courses - O & LG. Parking £1.00. No dogs. [www.halo-orienteering.org.uk](http://www.halo-orienteering.org.uk)
- 28th SW **WSX 16th Dorset Delight Regional Event.** Rushmore Estate, SE of Shaftesbury. ST/969172.
- C3 Organiser: Tracy Crickmore, 01929 550 680. [roger.tracy@virgin.net](mailto:roger.tracy@virgin.net)  
Entries: Alan Brown, 43 Kings Avenue, Christchurch, Dorset, BH23 1NA, 01202 473714. [alan@wsx.cix.co.uk](mailto:alan@wsx.cix.co.uk) CD: 12/03/04. £5.50/£2.50, Family (max 2+4) £13.00. Lim EOD +£1.00, Family 50p each. Chq: WSX OC. EPS-SI. Punching start. String course. Lim CC courses - W, Y, O & LG - £3.00/£1.50. Parking £1.00. Dogs on lead at all times in car park only. [www.wessex-oc.org](http://www.wessex-oc.org)



- 28th EM **DVO District Event.** Linacre, Chesterfield. SK/335733.  
 C4 Margaret Keeling, 01773 852991. £4.00/£1.00. EPS-SI. String course. Parking £1.00 at Peacock Inn on B6050 at west end of Cutthorpe. Bus service 279 from Chesterfield. Dogs on leads at all times. [www.dvo.org.uk](http://www.dvo.org.uk)

## April 2004

- 3rd-4th SOA **SOA (SEDS) Senior Home International 2004 & Elite Test Weekend**  
 O3 **3rd - Elite Test Individual & SHI + Scotland v Lithuania.** The Trossachs, Stirling.  
 O3 **4th - Elite Test Relays & SHI + Scotland v Lithuania.** Barr Wood, Stirling.  
 Enquiries and entries: Gordon Ross, 113 Rowan Crescent, Falkirk, FK1 4SH. +370 653 10009. [gordon@scottishotours.com](mailto:gordon@scottishotours.com) CD: 15/03/04. Ind - £10.00/£6.00. Relays - £28.00 per team. No EOD. Chq: AROS. EPS-Emit. Day 1 - Full length classic. Open ET & SHI. Also featuring Scotland v Lithuania match (including Vets up to M/W 55). Day 2 - Open Relay Men & Women Classes. Teams of 3. Any combination of clubs, ages etc. Bulletin 2 available on website late October 2003. No dogs. [www.aroselitetest.org.uk](http://www.aroselitetest.org.uk)
- 4th WM **WRE Regional Event.** The Wrekin, Telford. SJ/629092.  
 C3 Organiser: Richard Lewis, 01948 840428.  
 Entries: TBA. CD: 21/03/04. £8.00/£3.00 + SI hire £1.00. EOD CC £4/£1.50. No C3 EOD. Chq: Wrekin Orienteers. EPS-SI. String course. EOD CC courses - W, Y, O & LG. Parking £1.00. Dogs on leads.
- 4th YH **SYO District Event.** Greno Woods, Sheffield. SK/323957.  
 C4 Brian Shaw, 01433 631523. [b.shaw@dyson-techceramics.com](mailto:b.shaw@dyson-techceramics.com) £4.00/£1.00. EPS-SI. String course. Parking £1.00. Dogs on lead in car park only. [www.southyorkshireorienteers.org.uk](http://www.southyorkshireorienteers.org.uk)
- 4th EA **WAOC District Event.** Chicksands Wood, Shefford. TL/105405.  
 C4 Mike Capper, 01733 235202. [mike.capper@virgin.net](mailto:mike.capper@virgin.net) £4.00/£1.50. EPS-SI. String course. White to Blue courses only. Dogs on lead. [www.waoc.org.uk](http://www.waoc.org.uk)
- 9th-12th NW **JAN KJELLSTROM ORIENTEERING FESTIVAL**  
 C5 9th - JK Training Event. Simpson Ground, Ulverston. SD/398863.  
 Starts 1100 - 1600. EPS-SI. Dogs in car park only. Parking permit required - see main details.  
 C1 **10th - JK DAY 1, World Ranking Event, UK Cup & FCC.** Graythwaite, Ulverston. SD/353928.  
 C1 **11th - JK DAY 2, World Ranking Event, UK Cup & FCC.** Graythwaite, Ulverston. SD/371915.  
 R1 **12th - JK Relays & UK Relay League.** Graythwaite, Ulverston. SD/369940.  
 Coordinator: Sue Denmark, 01772 700327. [sue@denmark.demon.co.uk](mailto:sue@denmark.demon.co.uk)  
 Entries: Sue Birkinshaw, 221 Hale Road, Hale, Altrincham Cheshire, WA15 8DN, 0161 980 5068. [sbirkinshaw@cssystems.net](mailto:sbirkinshaw@cssystems.net) Internet entry preferred for Days 1 & 2. Paper entries on special form. CD & Fees: By 15/1/04 - £22.00/£6.00, By 7/3/04 - £26.00/£8.00. Late Entry by 20/3/04 Internet Only - £30.00/£10.00. After 20/3/04 there may be some entries available at the discretion of the entries secretary. Please contact first. Non BOF - + £10.00/£6.00. Entries for single days are at 50% of the full fee. EPS-SI. String course & Lim CC courses - W, Y & O on Days 1 & 2 only. Car Parking Permit for 4 days Cars £5.00, Minibuses £10.00, No Coaches. Dogs in car park and assembly only. Trail O at Rookhow Centre on Days 1 & 2. Relay entries from UK will be handled only on a club basis. Special Entry form distributed to all BOF clubs. Overseas entries may obtain entry form from Relay Entries Secretary: Phil Janaway, Step Cottage, Neston Road, Ness, Cheshire, CH64 4AT. [philjan@wirralway.u-net.com](mailto:philjan@wirralway.u-net.com)  
[www.sroc.org/jk2004.html](http://www.sroc.org/jk2004.html)
- 10th-11th NW **JK2004 TRAIL-O**  
 T1 **10th - JK2004 Trail Orienteering Day 1 (Elite).** Rookhow, Ulverston. SD/332894.  
 T5 11th - JK2004 Trail Orienteering Day 2 (Recreational). Rookhow, Ulverston. SD/332894.  
 Organiser: Alan Goodall, 01704 893837. [alan@goodall.ukfreedom.com](mailto:alan@goodall.ukfreedom.com)  
 Entries: Jan Goodall, 121 New Lane, Burscough, , Ormskirk, Lancs., L40 0RX, 01704 893837. [jctrailo@goodall.ukfreedom.com](mailto:jctrailo@goodall.ukfreedom.com) CD: 20/03/04. £9.00/£5.00. CATI entrants each day £3.50/£2.50. Lim EOD. Chq: JK2004. Also Come & Try It Trail-O on 10th. Parking £2.00. Dogs allowed on leads only. Starts 1430 - 1730. E-mail: [jctrailo@goodall.ukfreedom.com](mailto:jctrailo@goodall.ukfreedom.com) Special entry form required - available from JK website or from BOF Office. [www.sroc.org/jk2004.html](http://www.sroc.org/jk2004.html)

---

## EMEWS

---

- 17th NW **SROC British Blodslitet.** Scout Scar, Kendal. SD/480897.  
O3 Organiser: Tim Watkins, 01257 269439. [timwatkins@btopenworld.com](mailto:timwatkins@btopenworld.com)  
Entries: Ian Evans, 10 Ribby Avenue, Wrea Green, Preston, PR4 2ND, 01772 685951.  
[evanski@ukgateway.net](mailto:evanski@ukgateway.net) CD: 31/03/04. £9.50/£4.00. Lim EOD. Entries after 31/03/04  
+£1.50/£1.00. Chq: SROC. EPS-SI. Mass start race. Dogs on lead in car park only.  
[www.sroc.org](http://www.sroc.org)
- 18th YH **AIRE Regional Event.** Flasby Fell, Skipton. SD/975539.  
C3 Organiser: Tom Crowther, 01943 877491.  
Entries: Chris Burden, 12 Carlton Grove, Shipley, West Yorks, BD18 3AS, 01274 583853.  
[chris.burden@btinternet.com](mailto:chris.burden@btinternet.com) CD: 03/04/04. £7.50/£3.50. Lim EOD +£1.00/50p. Chq:  
Airienteers. EPS-SI. String course. Y, O & G courses. Parking £1.00. No dogs. Details and  
results will be on website. If paper copies required, enclose SAEs. [www.aire.org.uk](http://www.aire.org.uk)
- 18th WM **HOC Regional Event & Midland Championships & FCC.** Breakneck Bank & Stuart Common,  
Wyre Forest, Bewdley. SO/708793.  
C3 Organiser: Steve Chiverton, 01905 354952.  
Entries: Mike Farrington, Breakbeck Bank C3, Oak Lodge, Floyds Lane, Wellington Heath,  
Ledbury, Hfd, HR8 1NB, 01531 635502. [mike@farrington.me.uk](mailto:mike@farrington.me.uk) CD: 28/03/04. £8.00/£3.00  
+ £1.00 SI hire. No EOD, but late entries after 13/4/04 +£2.00. Chq: Harlequins OC. EPS-SI.  
String course. EOD Lim CC courses - W, Y, O, & LG (master maps) - £4.50/£2.00. Parking  
£1.50. Dogs on lead in car park only. [www.harlequins.org.uk](http://www.harlequins.org.uk)
- 18th EM **LOG District Event & EM Gallophen.** Stapleford Woods, Newark. SK/861566.  
C4 Karl Pickworth, 01526 320136. [pickworths@aol.com](mailto:pickworths@aol.com) £4.00/£2.00. EPS-SI. Parking TBA.  
Dogs on leads. [www.logonline.org.uk](http://www.logonline.org.uk)
- 18th EA **SMOC District Event.** Stowe Country Park, Buckingham.  
C4 Colin Nicholson, 01638 750752. Fees TBA.  
*Full registration pending*
- 25th NE **CLOK Regional Event.** Wilton & Lazenby, Eston.  
C3 Organiser: J Trigg, 01642 279668. [joe.trigg@ntlworld.com](mailto:joe.trigg@ntlworld.com)  
Entries: TBA. CD: unknown. £7.00/£3.00. String course. No dogs. [www.jordan.g.btinternet.co.uk](http://www.jordan.g.btinternet.co.uk)
- 25th EM **DVO District Event.** Crich Chase, Ripley. GR/346533.  
C4 Brian Ward, 01773 850272. £4.00/£1.00. EPS-SI. String course. Dogs on leads at all times.  
[www.dvo.org.uk](http://www.dvo.org.uk)

## May 2004

- 1st YH **EBOR Mountain Bike Orienteering - 2-hour Score Event.** Gilling Woods, Ampleforth, Helmsley.  
GR/588766. (*non BOF event*)  
MTBO Organiser and entries: Steve Willis, Denholme Back Street, Aldborough, Boroughbridge, York,  
YO51 9EX, 01423 323435. [steve@aldborough.freeseve.co.uk](mailto:steve@aldborough.freeseve.co.uk) CD: 26/04/04. £7.00/£3.50.  
1-hour NC course - £3.50. Reductions for TCA, EBOR, CLOK members and own SI. Lim EOD.  
Chq: EborMBO. EPS-SI. Starts 1300 - 1345. Dogs on lead in car park and forest.  
[www.eborienteers.org.uk](http://www.eborienteers.org.uk) [www.trailquest.co.uk](http://www.trailquest.co.uk)
- 1st-3rd SW **TRIPLE O SEVERN WEEKEND**  
O2S **1st - BOK/SWOC Short Race & UK Cup & FCC Final.** Russell's Enclosure, Forest of Dean.  
Organiser: Andrew Pearce, 0117 960 7181. [andrew.i.pearce@blueyonder.co.uk](mailto:andrew.i.pearce@blueyonder.co.uk)  
C2 **2nd - NGOC NATIONAL EVENT, World Ranking Event, UK Cup & FCC Final & Southern  
Championships.** Lydney Park, Lydney. SO/625022.  
Organiser: Roger Coe, 01594 510444. [roger@coefamily.freeseve.co.uk](mailto:roger@coefamily.freeseve.co.uk)  
R2 **3rd - BOK Harris Relay & UK Relay Cup NOTE BRITISH RELAY CHAMPS NOW.** Moseley  
Green, Forest of Dean.  
Organiser: Andrew Pearce, 0117 960 7181. [andrew.i.pearce@blueyonder.co.uk](mailto:andrew.i.pearce@blueyonder.co.uk)  
Entries: Mike Forrest, 70 Upper Cranbrook Road, Westbury Park, Bristol, BS6 7UP, 0117 924  
7441. [mike@forrests.demon.co.uk](mailto:mike@forrests.demon.co.uk) CD: unknown. Fees TBA. No EOD. String course. CC  
courses - W, Y, O, R & LG. Dogs on lead in car park only. Special "Triple O Severn" entry form

- required. [www.ngoc.org.uk](http://www.ngoc.org.uk)
- 8th EM **LEI District Event.** Swithland Woods, Leicester. SK/537130.  
 C4 Chris Phillips, 0116 255 0330. [onecphillips@lineone.net](mailto:onecphillips@lineone.net) £3.50/£1.50. EPS-SI. String course. Parking £1.00. Dogs on lead. [www.leioc.co.uk](http://www.leioc.co.uk) *Full registration pending*
- 15th EM **DVO Local Event.** Black Rocks, Cromford, Matlock. SK/292558.  
 C5 Mike Godfree. [mike.godfree@bosinternet.com](mailto:mike.godfree@bosinternet.com) £2.00/£1.00. Parking TBA. Dogs on leads at all times. [www.dvo.org.uk](http://www.dvo.org.uk)
- 16th SE **MV Harvester Night Relay Trophy & UK Relay League.** Pippingford Park, Crowborough.  
 R2N Organiser: Mike Elliot, 01372 273106.  
 Entries: addressee TBA. *CD: unknown.* Fees TBA. EPS-SI. [www.mvoc.org/](http://www.mvoc.org/)  
*Full registration pending*
- 23rd NW **LOC NATIONAL EVENT & UK Cup.** Holme Fell, Coniston. GR/318018.  
 C2 Organiser: Sue Butterfield, 01229 582770. [bbobsue12@aol.com](mailto:bbobsue12@aol.com)  
 Entries: Janet Nash, 11 Hayfell Rise, Kendal, Cumbria, LA9 7JP, 01539 725921. [j-nash@supanet.com](mailto:j-nash@supanet.com) *CD: 30/04/04.* £10.00/£4.50. Family (2+2 or more) £26.00. Internet entries via LOC website (*CD: 7/5/04*). Lim EOD +£1.00. Chq: Lakeland OC. EPS-SI. String course. Lim CC courses. Dogs in car park only. [www.lakeland-orienteeing.org.uk](http://www.lakeland-orienteeing.org.uk)
- 29th SOA **NATIONAL EVENT & SCOTTISH CHAMPIONSHIPS**  
 C2 **29th - NATIONAL EVENT & Scottish Individual Championships.** Errochty, Blair Atholl.
- 29th- SW **C4 Tamar Triple Weekend**  
 31st **29th - Day 1 District Event.** Smallhanger Waste, Plympton. SX/550599.  
**30th - Day 2 Regional Event.** Dunmere Wood, Bodmin. SX/043695.  
**31st - Day 3 Regional Event.** Plym Forest, Plympton. SX/547597

### Sports Personality of the Month

The award for this month has to go to the EMOA committee member who told the rest, "I haven't been in a shop in 30 years. The other day my wife sent me to Sainsburys, but in order to do so, she drew a map of the supermarket, it's shelves and a list of places to visit to get all the different items she wanted. I then had to follow her map around the supermarket and download at the checkout". Yes, step forward, acting EMOA chairman, John Woodall. So now all you orienteering widows and widowers know how to get your partners to do the shopping!

### British Relay Champs 2004

After careful consideration of a number of options it has been agreed that The British Relay Championships will take place on Monday 3rd May 2004 as the finale to the Triple O Severn weekend. (Note from BOF website)