

The Newsletter of
the
East Midlands Orienteering Association

September/October 2008



EMEWS EDITOR:

Mike Gardner
3 Gatcombe Close
Oakwood
Derby
DE21 2PZ

Email: mikegardvo@aol.com

EMEWS

EMEWS is the newsletter of the East Midlands Orienteering Association. The views expressed in this newsletter are not necessarily those of the East Midlands Orienteering Association, nor of the Committee..

East Midlands website: www.emoa.org.uk

Copy Date for next issue: **1st December 2008** Contributions are always welcome but especially by e-mail (mikegardvo@aol.com).

----0000----

Cover Picture

Thanks again to Ernie Williams for his cover.

Contents – EMEWS 221

Cover – Ernie Williams	1
EMOA Committee Report – October 6 th 2008	4
Minutes of 44 th EMOA AGM – Bob Alderson	7
Treasurers Report to AGM – Dave Bennett	10
Badaguish 2008 – Jenny Evans	12
Uppsala 2008 – Fiona Claxton	13
Out and About – Clumber Park	14
Around the Clubs	16
East Midlands OA League	17
Fixtures	20



**The official supplier of Craft ‘O’ kit and Craft clothing.
For expert advice, competitive process and high performance clothing.
Visit <http://www.ultrasport.co.uk>**

<i>BEST SHOES*</i>	<i>BEST COMPASSES</i>	<i>BEST CLOTHING</i>	<i>BEST EQUIPMENT</i>
V-J LOP £39.95	MOSCOW 11C + £16.95	CRAFT CLUB 'O' TOPS from £29.95	CONTROL CARDS – 100 £ 4.50
V-J LOP STUD £49.95	MOSCOW 11T + £18.95	AS-ILVES 'O' TOPS from £29.95	CONT. CARDS – TYVEK £ 9.95
V-J FALCON STUD 67.95	MOSCOW 2C \$ £27.95	AS-ILVES 'O' TROUSERS 16.95	CODED CLIPPERS – 10 £19.95
V-J INTEGRATOR £59.95	MOSCOW 3C \$ £30.95	ARIES 'O' TROUSERS £14.95	CONTROL FLAG £ 3.25
V-J INTEGRATOR STUD 69.95	MOSCOW 3T \$ £32.95	V-J PROTECH GAITERS £17.95	TRAINING MARKER £ 2.55
V-J TWISTER STUD £69.95	MOSCOW MAGNIFYING LENS £12.95	ARIES PROTECH GAITERS *NEW £16.95	TIMEX 30 MEM WATCH £34.95
ADIDAS SWOOP £59.95	SILVA 7NL £ 9.95	ARIES DELUXE GAITERS £12.95	ANKLE TAPE £ 5.95
PB TRAINER £54.95	SILVA 3NL £14.95	TRIMTEX BRAMBLE BASHERS £ 8.95	MUELLER ANKLE BRACE £26.95
INOV-8 FLYROC £64.95	SILVA 5 JET £54.95	RON HILL TRACKSTERS £13.95	SPORTident e-CARD £22.00
INOV-8 MUDCLAW £64.95	SILVA 6 SPECTRA \$ £54.95	RON HILL TREK £19.95	E-CARD DESC. HOLDER £ 3.00
INOV-8 MUDCLAW 330 'O' £64.95	SILVA 1S JET S £59.95	RON HILL V ILOFT THERMAL £14.95	MILA HALOGEN SET 4.5Ah £130.00
# Metal Studs	Childrens sizes approx 15% cheaper	+ Fast Needle	\$ Superfast Needle

TO SEE OUR FULL RANGE OF ORIENTEERING PRODUCTS AND SPECIAL OFFERS VISIT OUR WEBSITE

<http://www.ultrasport.co.uk>

ultrasport Ltd, Nova House, Audley Avenue Enterprise Park, Newport, Shropshire TF10 7DW
Tel : 01952 813918 Fax : 01952 825320 E-Mail : ian@ultrasport.freemove.co.uk

EMOA Committee Meeting Report - Oct 6th 2008

East Midlands AGM - You will find the minutes of the AGM elsewhere in this issue. The main concern was that even having the AGM at an event did not result in any dramatic increase in attendance. The advantage was that the meeting was quorate (just) and if it had not been it would have been possible to pull others in. It only appears we get any increase in attendance when there is something truly controversial to discuss (e.g. a large rise in fees). Is it that the EMOA committee is doing exactly what folk want so see no need to attend? Is it folk are afraid that if they attend they may be asked to take on a role? Any view as to why folk don't attend AGMs and what we can do to increase the numbers would be appreciated.

Interest and Tax - One point raised at the AGM was whether we should be paying tax on the interest we are gaining from our back accounts. Dave Bennett has contacted Mick Lucking to discuss this and it is being looked in to.

Grants for Home Internationals - There was a request for support to attend the Home Internationals from an EMOA person representing England. This year with the event being in Northern Ireland the costs were much higher. The main concern of the committee was whether this implied we would be paying twice as we already send a large amount to the English Orienteering Council to pay for these costs. However, it was agreed that we would pay 1/3 of whatever was left between the costs incurred by the traveler and the amount they had received from the EOC.

Treasurers Report - The updated budget following the AGM is shown elsewhere in this issue. There is now a high degree of flow of income and expenditure due to the satellite club project. It is proposed to ensure the funding for this is clearly shown in the accounts going forward, so we can distinguish it from other accounting items.

British Sprint Champs levy - It was agreed that the profit share with British Orienteering for the Short Race Weekend will be through the clubs and not EMOA. It is proposed that EMOA will charge the standard rate for EMOA events for the SI kit on these events.

Fixtures Rule - We had been asked to comment on the rules for the new fixture structure implementation. There has been a rule of thumb in the past that all regional events had to be 100 miles apart. With the new structure this may not be so easy to implement as the colour coded and regional events will have the same designation in the fixtures list. East Midlands felt that a proposal that a club should be able to nominate one event a year for this 100 mile protection, but only one could be guaranteed it, would be the best way forward. This would provide those clubs with less well endowed areas with some protection and income from their top events.

Fixtures Review - The following comments were made around some of the major events coming up in EMOA:

- 2009 East Midland Champs - NOC's event at Clumber Park on 1st February 2009.
- 2009 CompassSport Cup - NOC are hosting at Sherwood Pines on 29th March.
- 2009 British Elite Sprint Championships / 2009 British Middle Distance Championships - There is going to be known as the Short Race Weekend. Joint flyers are to come out in CompassSport and in Focus. There will be a single entry form for both events. Everything proceeding to plan.
- 2009 Compass Sport Cup and Trophy Final - LEI - The venue proposed by LEI has been rejected by the controller. They are potentially looking at Fineshade as an alternative. LEI have Fixtures meeting next week to make decision. - 18th Oct.
- 2009 Veteran Home Internationals - DVO - Longshaw and Eyam (14/15th Nov) - Everything on schedule. Hilary Palmer has some provisional accommodation reserved with Castleton Youth Hostel. Wanted someone from DVO to take ownership of this side of things.
- 2010 Midland Champs - LEI - Belvoir (21st Mar) - using large area not previously used for around 30 years
- 2011 Compass Sport Cup and Trophy Final - DVO - Allocated as 16th October
- 2011 British Schools Orienteering Champs - EMOA to host
- 2013 Yvette Baker Trophy Final - EMOA to host

Next Years JK - EMOA have been asked to assist at next years JK in the North East. We have agreed to do this by running the starts on 2 of the days. The intention is to have someone in the North East as the co-ordinator with us and we will have a key contact who will arrange from our side. Volunteers to assist will be asked for soon, and we hope to have some more details available in case you need to state anything special on your entry form. It is intended to have more details in the next EMEWS.

Coaching - Training in the new level 1 Coaching Award, which is the entry level for new coaches, is now starting. Courses have a maximum of 10 people on them and take place over 3 days. There are also bridging courses for those who need to move to the new qualification from the previous one.

Development - The committee then spent some time discussing the whole area of coaching and development. We really do need a Development Officer for EMOA, so please consider if you can assist. The plans at present are to try to pull together a set of development / coaching courses for coaches, planners, mappers, etc. and put in an application to British Orienteering on behalf of EMOA (as there is development grants available there). Then we need to make sure there are courses scheduled during the year to enable development to take place. In the interim a policy was agreed that if someone was attending any of the formal courses from an EMOA club, EMOA would be willing to fund 50% of the balance they were expected to pay (it is expected the clubs would provide the other 50%).

EMEWS

One thought was that other regions (like WMOA) have designated days for volunteer development where no events are scheduled. Should we have these in EMOA?

Satellite Clubs - The Satellite Clubs project is just beginning to get underway. Dan Riley has been appointed as the organiser for the first club in the Buxton area. A CATI was held in Buxton Gardens in the middle of the town, and had a lot of publicity (special thanks went to BOF Office for all their assistance). The event attracted over 150 attendees. An introductory club night took place the following Tuesday and had 35 attendees. The first report to Sports England is now due. There has been a lot of effort put in by a lot of people to get this started, so we look forward to seeing it progress.

SI Kit - Derek Gale put forward a proposal to see where EMOA wants to go with all of the SI kit going forward. Some clubs have got their own kit, and we are getting close to being in a position where we could purchase another set of kit and then have each club managing its own set of kit. This would then mean no EMOA involvement any more. Clubs would need to maintain their own kit. The clubs are being asked if this is the way they want to go, and if so, have they the expertise to manage the kit. Also, is EMOA willing to spend the money to make the kit available, and then have no income from that kit (there could be no EMOA levy as the kit would be the clubs kit from that point on). Further discussion needs to take place at the clubs, whether EMOA should spend its funds on purchasing the kit, etc.

Rosliston National Forest Centre in Get Active Final - Last time in EMEWS I mentioned that the Rosliston National Forest Centre Get Active in the Forest was up for public voting in the National Lottery awards. Well it won the Best Sports Project. You can see more information at <http://www.lotterygoodcauses.org.uk/awards/>

Electronic EMEWS - One way we could keep costs down is by distributing EMEWS electronically. Mike does this today to a small number of folk. If anyone else would like to be included in the electronic distribution list (and not get a paper copy) let Mike know at the email address on front of EMEWS.

Committee Meetings - A reminder that any member can come and attend the EMOA committee meetings if they wish to do so (though they cannot vote). Next meetings will again be at Clifton Village Hall starting at 7:30pm on 1st December.

-----0000-----

For those of us who have problems in the forest, help may be at hand. The Sunday Times has reported Canadian research in the journal Neuropsychologia on a man who gets lost in his own neighbourhood. Scans have revealed an inability to imagine maps that has been termed 'selective developmental topographical disorientation' or SDST. More can be found on their website www.gettinglost.ca. I only hope I can find it.

**MINUTES OF THE 44th ANNUAL GENERAL MEETING OF THE EAST MIDLANDS
ORIENTEERING ASSOCIATION HELD ON SUNDAY September 7th 2008 at Kedleston
Hall at 10.35 am**

Present : Derek Gale (Chairman), John Woodall, Dorothy Woodall, Ernie Williams, Roger Edwards, Ranald Macdonald, Viv MacDonald, Pauline Olivant, David Olivant, Hilary Palmer, John Hurley, Jen Gale, Dave Bennett, Dave Chaffey, Mark Spendlove, Graham Johnson, Liz Godfree and Bob Alderson

- 1. Apologies for absence:** Roy Denney, Chris Phillips, John Palmer and Hazel Rice

2. Minutes of the 43rd AGM.

There are no minutes of the 43rd AGM. A proposal by John Woodall, seconded by Hilary Palmer, that those present at the 43rd AGM confirm that the officers of the Association were duly elected and that the meeting was quorate, was carried.

3. Chairman's Report

I would like to take this opportunity to look back over the last year and perhaps take a look forward.

We have seen significant changes to British Orienteering, particularly in its governance, and of course the changes to the event structure. In part this latter aspect can be traced back to discussions in EMOA. We can now look forward to running events in the new style. We will also need to consider changes to the EMOA constitution as a result of the dissolution of the BOF Council. I await with interest to see how the new liaison between the Board of British Orienteering and the Associations will work out.

I am pleased to see the development of alternative event types such as Ultrasprint, which I witnessed at Sheffield, and the growth of the City Races. These plus other initiatives are part of British Orienteering's attempt to bring more people into the sport by making it more visible.

East Midland clubs have been successful at Junior and Senior levels with the Junior Squad coming 4th in the inter regional. At the other end of the age scale Liz Godfree is the World Sprint Champion for W60 and Paul Addison & Liz helped England to VHI success.

With regard to developments within the East Midlands I am particularly pleased with the new EMOA Web Site and must thank John Cooke for his work on this. LEI have gained Clubmark which now means all three major clubs have now achieved this. We are also about to start up our first Satellite Club at Buxton with the help of funding from Sport England. I must thank Pauline Olivant as the Regional Development Officer for her hard work on this.

Finally, I must thank the committee for their support during the year.

4. Secretary's Report

There was no Secretary's Report in the absence of the Secretary.

5. Treasurer's Report and approval of Balance Sheet and Income & Expenditure Statement

The key points from the Annual accounts are:

A surplus of £3170 compared to budgeted deficit of £1695, the main variances to budget being:

EMEWS

- event levies £800 higher
- £1500 grant for satellite clubs project which has not yet been spent
- income from junior squad £1229 higher, of which £270 from fund-raising, the rest from contributions at a higher rate
- junior squad expenditure £725 lower, due to the squad weekends using cheaper accommodation (halls instead of youth hostels) and sharing a weekend with Welsh junior squad
- junior squad subsidy therefore £375 instead of budgeted £2100
- interest £527 higher, on which Roger Edwards observed that we should be paying tax - action DB to contact Mick Lucking

The budget assumes the same as last year with following exceptions:

- no sale of places on a First Aid course, reducing Sponsorship income by £155
- no fund raising by junior squad, reducing Junior income to £3100
- any new grants for satellite clubs project will be spent, so zero net income
- no other grants applied for (the grant in 2007-08 was a one-off application)
- income and expenditure for SI equipment lost by clubs will net to zero
- no expenditure on coaching equipment (one-off in 2007-08)
- increased expenditure on EMEWS, due to increasing membership and postage prices
- 2007-08 income for satellite clubs project will be spent, net effect of any new grants will be zero
- no expenditure on development as 3-year commitment to DVO Community Sports Coach has ended
- Junior expenditure to increase by 5% for inflation in external costs
- Equipment maintenance and replacement expenditure reduced to £400, assume zero net effect for SI equipment lost by clubs
- SI expenditure reduced to £1000, to reflect that whilst there will be expenditure, there are no costed proposals at present

On this basis, the budget proposes a surplus of £912.

Observations on the budget at the meeting were:

- EMOA have a commitment to development expenditure of £300 to satellite clubs project
- Junior expenditure will be higher as the JHI are in Northern Ireland for which travel cost will be expensive
- SI expenditure comes from SI fund on balance sheet, not from income and expenditure account. (*post meeting note: the SI fund on the balance sheet no longer exists, as all the funds were consolidated back into general funds in the year-end accounts for 2006-07*).
- *Post meeting note: the budget will also be updated for the new event categories (as below)*

6. Election of Principal Officers

Post	Proposed	Proposer	Seconder	Outcome
President	John Woodall	Bob Alderson	Ernie Williams	Elected
Chairman	Derek Gale	John Woodall	Dave Bennett	Elected
Vice Chairman	Ernie	John Woodall	Bob Alderson	Elected

EMEWS

	Williams			
Secretary	Bob Alderson	Hilary Palmer	Ernie Williams	Elected
Treasurer	Dave Bennett	Bob Alderson	John Woodall	Elected

7. Election of other officers

Post	Proposed		Outcome
BOF Council	EMOA Chairman	These Officers were elected unopposed	Agreed
BOF Rules Group	Ernie Williams		Elected
BOF Coaching	Hilary Palmer		Elected
BOF Fixtures	Ian Whitehead		Elected
BOF Mapping	David Olivant		Elected
Web Master	John Cooke		Elected
EMEWS	Mike Gardner		Elected
Development	Vacancy		Vacancy

8. Appointment of Independent Financial Examiner.

Roger Edwards was proposed by Hilary Palmer and seconded by John Woodall and was duly appointed.

9 Budget projections and Fixing of charges

- (a) It was agreed to keep annual subscriptions unchanged at the current rate of Senior £3, Junior £1, Family £5, Group £10 and Club £15.
- (b) Event Levy to remain unchanged, but will need revision to reflect the new event structure, and the budget will need to be revised on that basis:
 - C3 Senior 85p, Junior 20p, less first £25 of sum due
 - C4: Senior 60p, Junior 15p, less first £25 of sum due
 - C5: As C4 but only pay if levy is more than £10
- (c) SI hire unchanged as Senior 40p and Junior 10p (no charge for C5 events)

Proposer: John Woodall

Seconder: Bob Alderson

10 Plans for the coming year

- (a) Ernie Williams is to review and revise the EMOA Development Plan based partly on members responses to a questionnaire for members, available at this event and on the EMOA website.
- (b) Planning is well underway for the weekend of 9th/10th May 2009 which will see the British Elite Sprint Championships take place at Nottingham University on the 9th, and the British Middle Distance and Age Class Championships take place at Thringstone and Cademan Woods on the 10th.

Meeting closed at 11.05 am

Bob Alderson
17.9.2008

-----000-----

EMEWS

Treasurer's Report to AGM

East Midlands Orienteering Association

Budget for year 2008/09

<u>INCOME</u>	2008/09 budget	2007/08 actual	2007/08 budget	
Membership	£1,550	£1,535	£1,350	
Event Levies	£2,950	£2,952	£2,150	
Interest	£850	£827	£300	
Sponsorship	£100	£255	£100	assume only Ultrasport ads in EMEWS; £155 is 2007-08 was one-off sale of places on a First Aid course assume income and expenditure will have zero net effect
Satellite Club Project	£0	£1,500	£0	
Junior Income & Clothing sales	£3,100	£3,379	£2,150	£270 in 2007-08 was fund raising one-off grant in 2007-08; do not expect to make any applications in 2008-09
Grants	£0	£290	£0	assume income from losses and expenditure on replacements will have zero net effect
payment for lost SI equipment	£0	£439	£0	
SI hire	£1,900	£1,908	£2,100	
TOTAL INCOME	£10,450	£13,085	£8,150	
<u>EXPENDITURE</u>				
Training, Grants				
Coaching Equipment	£0	£176	£0	one-off expenditure in 2007-08
Support to elite competitors	£550	£535	£450	
Trophies & certificates	£150	£168	£100	
EMEWS	£1,250	£1,108	£1,250	increased for inflation and increasing membership assume 2007/08 income is spent, and that future income and expenditure will have zero net effect
Satellite Club Project	£1,500	£0	£0	three-year support for DVO community sports coach has now ended; v2: increase to £300 for satellite clubs project
Development Funds	£300	£800	£800	
<i>sub total</i>	<i>£3,750</i>	<i>£2,787</i>	<i>£2,600</i>	
Running Costs				
Expenses	£200	£218	£225	
Meeting Hire of Rooms	£108	£93	£90	

EMEWS			
English Orienteering Council	£300	£330	£250
Insurances	£30	£29	£30
Training events/conferences	£50	£50	£50
<i>sub total</i>	<i>£688</i>	<i>£721</i>	<i>£645</i>
Junior coaching			
Non-specific	£4,200		£4,200
Transport		£1,195	
Accommodation		£1,375	
Entries		£905	
Administration			
Clothing			
<i>sub total</i>	<i>£4,200</i>	<i>£3,475</i>	<i>£4,200</i>
SI Equipment			
Equipment			
Maintenance/Replacement	£400	£811	£250
Insurances	£350	£336	£350
Equipment purchase	£1,000	£1,787	£1,800
<i>sub total</i>	<i>£1,750</i>	<i>£2,934</i>	<i>£2,400</i>
TOTAL EXPENDITURE	£10,388	£9,916	£9,845
Surplus/(Loss)	£62	£3,170	(£1,695)
<u>All charges unchanged</u>			
		£3 senior	
		£1 junior	
		£5 family	
		£10	
Membership (new members free)		associate	
		£15 club	
Level 1 & 2 event levy		85p senior	
		20p junior,	
		Less £25	
Level 3 event levy (paid only if at least £10)		60p senior	
		15p junior	
		Less £25	
SI hire (free if no EMEA levy payable)		40p senior	
		10p junior	

-----000-----

Badaguish 2008 - Jenny Evans

My summer tour experience this year was interesting to say the least, and extremely different to that of Lagganlia in 2007.

My season this year had been mixed after the disappointment of being ill and unable to train for 2 weeks before the JK then actually having good races, only to be followed by spraining my ankle at the beginning of June and doing no running for 3 weeks prior to the JIRC's. Despite all this I was selected for tour and was determined to go there and have a really positive weeks training after all the ups and downs of the season.



The first day we were training on Achlean (a wooded, undulating area close to Aviemore) and I was feeling good until, due to a combination of things, I acquired blisters. After a day these had turned into almost open wounds and were painful to even walk on to say the least. After 2 trips to Aviemore health centre and no running I made my aim to be able to run in the tour classic race at the end of the week. Unfortunately they were not improving and I was

gutted to have only managed to complete one morning of proper training in a week however I feel I still learnt lots and managed to make the week worthwhile.

One way was to watch all the other athletes whilst they orienteered. I had more time to watch other people's techniques and listen to the way they did things which helped me to think outside the box of my own methods. Another fun exercise that I took part in was 'mobile-o'. One person has a mobile phone (or walkie talkie) and sits at the start with a map. The other runs the course and also has a walkie talkie but no map and is purely doing what they are told by the invalid (i.e. me) at the start. I did actually manage to get some people round without losing them and I feel it helped me to think about what features you should be picking off on the way to a control and also having a very clear attack point.

Finally, the coaches at Badaguish focused a lot on the psychological side of orienteering and one moment that sticks in my mind is when we were brainstorming what made a winner. One suggestion was 'fights back when knocked down' and 'what doesn't kill them can only make them stronger'. Now that my feet have healed these are going to be two quotes that will stick in my mind and really motivate me in my first big race back which will be the Junior Home Internationals in Merseyside this September.

I would like to thank EMOA for funding me to take part in the Badaguish tour and I hope that they feel, as I do, that it was still a worthwhile week.

-----0000-----

Uppsala 2008: - Fiona Claxton

The tour to Uppsala, Sweden lasted two weeks, a week longer than any previous tours and was far more physically demanding. We got up just before 8 o'clock each morning, had breakfast and left for each area around 9am. This was my first ever experience in Scandinavian terrain so I was quite nervous about how I would cope with the navigation after everything I'd heard about how technically difficult it was. We were split in coaching groups as well as duty groups and allocated one of the four coaches. From day one I built on my skills and gained confidence with every exercise.

Whilst on tour I was introduced to lots of new 'exercises'. For instance, the 'Distractions Course'. This is where the coaches set out a course (gaffled) with various distractions along the way. These included *Sian* standing at our control telling us it wasn't ours. We were supposed to ignore her, however we didn't realise this at the time so spent a long time looking for a non-existent control. Another distraction was a control put in the wrong place which we were meant not to punch. The coaches also had a novel way of setting off a mass start where they had a pile of maps which they threw into the air and shouted 'go'. There was then a scramble to get a map. I remember this vividly as I decided to wait and get a map once the scrum had disappeared only to find, the coaches had taken out three of the maps and replaced them with a map of a random area and a blank piece of paper, leaving one person with nothing at all. So I, along with two others, were first told to chase after everyone else then shockingly encouraged to steal someone else's map! I saw an opportunity when Sophie Kirk (OD) dropped her map jumping a ditch. I swiped it and ran on (feeling guilty) into Ben Chesters and Steve Mclean, two of the coaches waiting to take down anyone who managed to reach the control without being mugged on the way. I dodged a rugby tackle and ran to the safety of the re-group point. We were all buzzing as Steve ran off with the maps then dropped them one by one in a trail. Approaching the final control on a spur I entered my worst nightmare, the coaches had hung dozens of controls all over the spur complete with SI boxes and we had to choose the control in exactly the right location. I quickly glanced at my map and took a chance on the furthest control before making the last mad dash to the finish.

It turned out I had punched the right control and all the other controls correctly throughout the course. Being the quickest girl to have done this meant I was that day's winner of the 'YELLOW JERSEY'. Not a good thing. There was a Yellow Jersey race each day, and the winner of it had to wear it for the next day's training. No washing of the shirt was permitted so you can imagine the stench by the final day.

Most days were over 27 degrees and we were often taken for a swim in the local lake of wherever we were, sometimes between morning and afternoon training. On the rest day we visited a small theme park and walked round Stockholm (a beautiful and noticeably clean city).

EMEWS

We also had a visitor by the name of Graham Gristwood who gave us a talk on being an elite athlete and his experience at the World Championships Relays, answered our questions and let us try on his recently won gold relay medal. He also came training with us the next day on a 'trains' exercise.

The last day saw slightly deflated sprits as we were all sad to be leaving, but I will always have amazing memories of the two weeks we spent living and training together. Everyone on tour was immensely grateful to the coaches for the hard work, late nights and early mornings spent hanging the controls, planning races and giving evening talks.

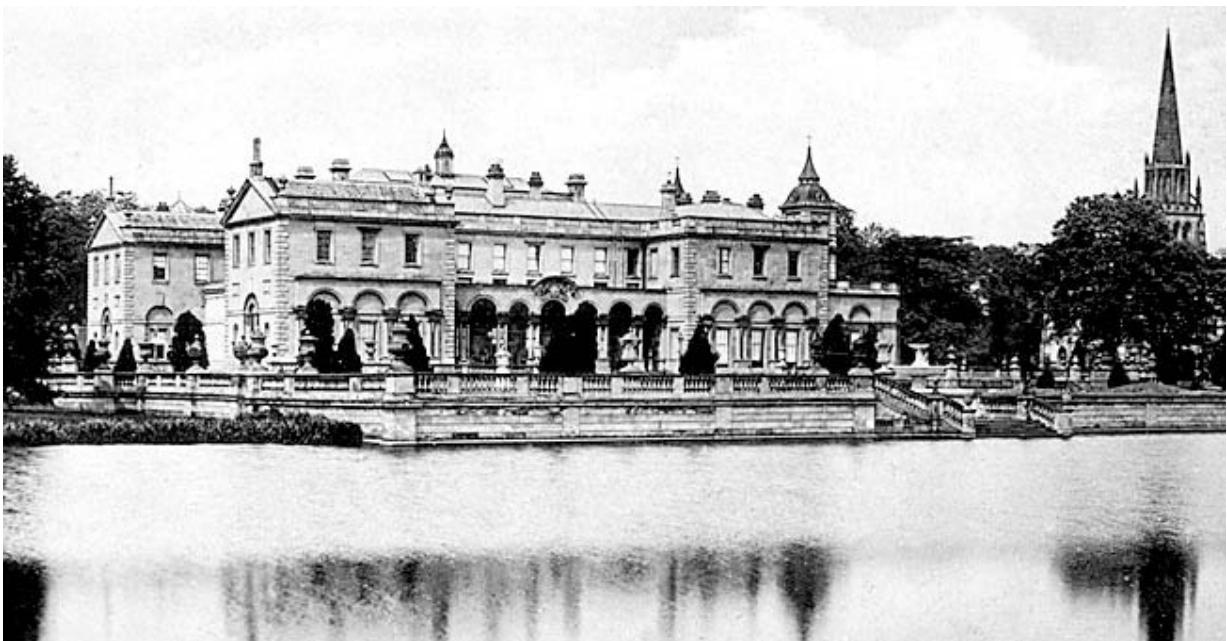
I learnt a lot on Uppsala, not just about the physical and technical but also the mental side of orienteering. I would like to thank NOC and EMOA for giving me the opportunity of a lifetime to improve my orienteering and experience the best two weeks of my life.

-----0000-----

Out and About - Clumber Park

Clumber Park is hosting a major event on 1st February - don't forget to get your pre-entries in. So I thought I'd have a look at Clumber as part of the Out and About series of articles. Given the size of the Park it is strange how little seems to be out there about it.

The park consists of around 3,800 acres, including woods, open heath and rolling farmland. It also contains a 87 acre serpentine lake and the longest double avenue of lime trees in Europe. The avenue extends over three miles and was created by the 5th Duke of Newcastle in the 19th century. The lake has been in existence since 1774. The Park was landscaped by Capability Brown.



This was the principal seat of the Pelham-Clinton Dukes of Newcastle from the 18th

century onwards. It seems that it was on being given the title of Duke of Newcastle that the 7th Earl of Lincoln had the house built.

The original Clumber House, which stood on what was once a waste of forest land, was built in 1770 of white freestone, which was brought from a quarry on the Duke's estate five miles away. At that time it was said that no nobleman in England possessed such a princely abode. Its situation was unique; the lake facing its central front added a decided charm to its outward appearance, and its architectural advantages and great size gave it claims to be classed in the first rank of the stately homes of England. The house originally consisted of three fronts, the centre one facing the water, containing a light Ionic colonnade; and looking at the building from the elegant bridge which crosses the lake, its appearance was most pleasing.

Of the eminent Dukes who have lived at the forest mansion mention must be specially made of Henry Pelham, fifth Duke, who died deeply lamented in 1864 after a busy life devoted to the public service. His Grace filled the onerous offices of Chief Secretary for Ireland, Secretary of State for the Colonies, and Secretary of State for War, holding the last-named appointment during a portion of that most anxious and trying period—the Crimean War.



In March 1879 a serious fire destroyed much of Clumber House, but the 7th Duke of Newcastle had it magnificently rebuilt to the designs by Charles Barry (the younger). Unfortunately, in 1938 there was another fire and this time the house was demolished. Charles Boot, of Henry Boot Construction, was contracted to do the demolition and he removed a vast array of statues, facades and fountains to his own Derbyshire home of Thornbridge Hall. However, the vast bulk of the furniture and facades was sold at auction to private buyers.

Many of the original features of the grounds do still remain, such as the Gothic Revival Church built by the 7th Duke of Newcastle and the walled kitchen gardens and glass houses.

One of the most famous artifacts is the bridge over the lake, which was the original approach to Clumber House. It is known the bridge was in place in 1762 according to the diary of a visitor. The bridge was built in classical style over the River Poulter which was dammed to form the Clumber Park lake.

The Park was originally left to the people of Worksop by the last Duke of Newcastle, but the National Trust purchased it in 1946. You can drive along some roads today but you do need to pay to get to the visitor facilities.

-----000-----

Around the Clubs

DVO

Congratulations to Liz Godfree again for winning her age class while representing England at the Veteran Home Internationals.

Unfortunately this was not enough to stop Scotland winning overall.

DVO hosted it's club champs at Longshaw recently. Men's champion was Mike Bradley and women's champion was Liz Godfree. Junior Champion was Jethro McGraw. On the White course every competitor got a medal which proved very popular with the youngsters.



NOC Juniors being congratulated include Peter Hodkinson, who has been selected for the British Orienteering Junior Squad 2008/9, and also in the M18 age group to represent GB in the European Youth Orienteering Championships, and James Taylor M17 and Jenny Evans W15 who have been chosen for the 2008/9 Start Squad.

It seems to be the year for NOC members to get married as Andrew Powell and Emily Parkin became the third couple to marry this year when they tied the knot in September.

LEI

Mairead Roche has been selected to run in the W18 class of the European Youth Orienteering Champs.

There is an RAFO event at Wakerley on Wednesday 22nd that is open to LEI members, but they need to contact the organiser in advance.



LOG



LOG have their new winter league start with 6 events from November 1st through to 17th January on a Saturday morning. The events will see training sessions available from 10 -11, followed by courses thereafter.

EMOA SURVEY

On the EMOA website there is a survey we would like members to complete. It is available at <http://www.emoa.org.uk/> "Is EMOA doing all that it can to co-ordinate and develop the sport of orienteering, as defined by the British Orienteering Federation, within the East Midlands, and further the development of, and participation in, the sport of orienteering, and to represent the interests of members and affiliated clubs and groups on representative bodies and to support their activities within the sport?" Please could you take the time to provide feedback.

EAST MIDLANDS OA LEAGUE – 2008

Welcome to the East Midlands league for 2008. This year again all C4 events that are designated to have all of the colour coded courses will count towards the league. So far we have had 9 events:

1 = Rough Park 2 = Calke Abbey 3 = Crich Chase 4 = Fermyn Woods
 5 = Thieves Wood 6 = Bourne Woods 7 = Hardwick Hall 8 = Burbage Common
 9 = Carsington Pastures 10 = Kedleston Park

There are still the following events to go (subject to changes due to access, etc.):

Oct 4 th - Lincoln South Common (LOG)	Nov 9 th - Bagworth (LEI)
Oct 12 th - Charnwood Forest South (LEI)	Dec 14 th - Whitesprings (DVO)
Nov 2 nd - Bestwood (NOC)	Dec 28 th - Beacon Hill (LEI)

The table below shows the top people (those who have scored more than 1000 points) with at most the top ten people being shown for each class.

White Course - Boys /Men

Forename	Surname	Club	Age							Bst 8	Posn
Ethan	Tebbutt	LEI	10	1000-2'	1000-4	1000-5	1000-6	897-10		4897	1
James	Boshier	DVO	10	811-2	1000-3	907-7				2718	2
James	Lowthian	NOC	10	531-3	506-4	1000-10				2037	3
Matthew	Jackson	DVO		776-3	480-9					1256	4

White Course - Girls /Ladies

Imogen	Wilson	LEI		1000-1	1000-4	1000-5	1000-6	1000-8	1000-9	981-10	6981	1
Francesca	Littlewood	NOC	10	1000-2	741-3	988-5	620-7	965-9			4314	2
Emma	Schaanning	DVO		1000-3	1000-7	687-10					2687	3
Joanna	Goodhead	DVO			760-5	617-6	1000-10				2377	4
Rhiannon	Emery	NOC			728-9	793-10					1521	5
Ailith	Smith	DVO	10	482-1	449-2	288-3	226-7				1445	6

Yellow Course - Boys /Men

Nicholas	Wilson	LEI	10	1000-1	1000-2	1000-4	518-5	1000-6	1000-7	1000-8	1000-9	7518	1
Euan	Tebbutt	LEI	10	841-2	864-4	1000-5	760-6	1000-10				4465	2
Thomas	Webster	NOC		509-5	407-8	445-9						1361	3
Dominic	Leake	LEI	8	735-1	534-2							1269	4

Yellow Course - Girls /Ladies

Jessica	Beresford	DVO	12	1000-2'	870-3	1000-5	1000-7	1000-9	1000-10	4870	1
Rachel	Schaanning	DVO	10	776-2	1000-3	872-7	945-9			3593	2
Charlotte	Webster	NOC		737-7	1000-8	592-9	745-10			3074	3
Elisa	Wayles	NOC		653-5	640-7	606-9	718-10			2617	4
Rachel	Kirk	RAFO		327-3	589-4	1000-6				1916	5
Lucy	Bourne	DVO		524-9	599-10					1123	6

EMEWS

Orange Course - Boys /Men

Jack	Lord	NOC	12	794-2	908-3	1000-4	713-6	861-7	691-8	100-0-9	779-10	6746	1
William	Parkinson	NOC	12	800-2	1000-3	808-5	722-6	1000-7	1000-10			5330	2
Nathan	Lawson	DVO	12	862-3	531-5	914-7	1000-8	932-9				4239	3
Miles	Plaskett	DVO	14	890-2	724-4	939-5	714-7	790-10				4057	4
Fraser	McNab	RAFO	12	739-2	799-3	577-4	540-8	342-9				2997	5
Nicholas	Gordon	DVO		940-3	794-7	752-10						2486	6
Craig	Youngs	RAFO	14	591-3	695-4	652-6						1938	7
Kieran	Huggan	NOC		1000-5	85-19							1815	8
Kevin	Kirk	RAFO		753-3	923-7							1676	9
Danny	Brown	NOC	14	1000-2	596-4							1596	0

Orange Course - Girls /Ladies

Islay	Sellar	DVO	14	1000-1	1000-2	1000-3	683-5	1000-10				4683	1
Jessica	Addison	DVO		699-5	830-6	1000-9						2529	2
Sophie	Gordon	DVO		537-2	1000-7	757-10						2294	3
Nicola	Northcott	DVO		686-7	734-9	772-10						2192	4
Rebecca	Navarette	RAFO		1000-4	1000-6							2000	5
Alison	Hayes	DVO		320-2	454-7	467-9	506-10					1747	6
Carol	Picksley	NOC		325-2	381-3	539-7						1245	7

Light Green Course - Boys /Men

Luke	Addison	DVO		1000-5	1000-6	971-7	1000-9	1000-10	4971			1
Laurie	Fluck	LEI	60	776-2	871-3	912-4	693-5	552-7	3804			2
Sam	Fraser	NOC	18	609-1	564-2	768-3	794-5	729-8	3484			3
Jordan	Webster	NOC		727-7	716-8	736-9	555-10		2673			4
Roy	Denney	LEI	60	900-1	773-2	1000-8			2673			5
Khem	Sattaur	DVO	14	422-2	1000-3	525-5	700-9		2647			6
Ben	Lord	NOC	14	527-2	764-3	699-4	554-10		2544			7
Max	Elliott	NOC	12	625-2	763-3	609-7	536-10		2533			8
Brian	Ward	DVO		766-6	822-8	634-9			2222			6
Luke	Grayson	RAFO	16	756-3	1000-4				1756			10

Light Green Course - Girls /Ladies

Harriet	Lawson	DVO	14	1000-1	926-2	1000-3	1000-4	871-7	1000-8	1000-9	1000-10	7797	1
Victoria	Littlewood	NOC	14	1000-2	865-3	1000-5	1000-7	899-9				4764	2
Hannah	McNab	RAFO	12	668-2	660-3	703-4	808-7	424-8	551-9			3814	3
Shirley	Moir	LEI		766-2	666-7	472-8	660-9	362-10				2926	4
Mary	Boothroyd	LEI	55	610-1	632-2	600-5	628-7	437-9				2907	5
Emma	Vincent	DVO	16	656-2	697-3	739-5	635-10					2727	6
Jane	Crofts	LEI	40	530-1	521-3	795-4	579-5					2425	7
Margaret	Buckland	NOC		596-3	741-6	697-7	356-10					2390	8
Barbara	Tebbutt	LEI		800-4	689-5	808-6						2297	9
Tara	McNab	RAFO	18	637-2	702-4	343-8	580-9					2262	0

Green Course - Boys /Men

John	Woodall	NOC	70	832-1	828-2	755-3	818-4	801-5	874-6	796-7	910-8	6614	1
Michael	Lindsay	DVO	55	582-2	809-3	957-5	859-7	751-8	800-9	858-10		5616	2
Donald	Moir	LEI		714-2	925-6	936-7	850-8	1000-9	1000-10			5425	3
Robert	Shooter	DVO		708-1	836-5	740-7	800-8	910-9	810-10			4804	4
Ian	Wilson	LEI		558-1	788-4	786-7	1000-8	867-9	792-10			4791	5
Tony	Buckland	NOC		1000-3	1000-6	841-7	994-9	941-10				4776	6
Jack	Tuck	DVO	18	618-1	742-2	670-4	825-5	681-7	650-10			4186	7
Derek	Bishton	DVO		689-2	590-3	743-5	678-6	694-7	740-1-			4134	8
Neil	Fraser	NOC	45	625-1	679-2	615-3	661-5	670-7	732-8			3982	9
Tony	Horsewill	NOC		591-3	805-6	794-7	905-9	810-10				3905	0

EMEWS

Green Course - Girls /Ladies

Pauline	Ward	DVO	60	975-3	1000-5	1000-6	1000-8	1000-9		4975	1
Jean	Sellar	DVO	16	704-1	621-2	762-3	664-5	764-7	721-10	4236	2
Helen	Parkinson	NOC	40	658-2	523-3	705-5	630-6	811-7	705-10	4032	3
Jane	Booker	NOC	50	713-2	671-3	762-5	894-7	863-10		3849	4
Jen	Gale	DVO	60	1000-1	803-2	1000-7	956-9			3759	5
Margaret	Keeling	DVO		814-2	657-3	927-9	873-10			3271	6
Jill	Baker	NOC		638-1	1000-4	676-7	786-8			3100	7
Elizabeth	Parkinson	NOC		1000-2	1000-3	1000-10				3000	8
Ann	Armistead	DVO	55	673-2	612-3	762-5	894-7			2941	9
Pauline	Jones	NOC		659-2	711-5	690-6	788-7			2848	0

Blue Course - Boys /Men

Robert	Haskins	LEI	55	544-1	759-2	644-3	943-4	646-5	814-7	755-8	684-9	5789	1
Roger	Edwards	LEI		944-1	925-2	1000-7	1000-8	839-9	977-10			5685	2
Mark	Spendlove	DVO	35	688-2	902-4	621-5	783-6	818-8	656-9	671-10		5139	3
Simon	Ford	LEI	65	1000-2	919-3	1000-6	886-8	991-10				4603	4
Andrew	Wallace	NOC		598-3	607-5	684-6	700-7	648-8	674-9	692-10		4603	5
Andy	Hawkins	DVO	60	854-2	888-3	995-4	927-6	847-7				4511	6
Mark	Sherriff	LEI	45	547-1	631-2	546-3	835-4	541-5	673-8	652-10		4425	7
David	Olivant	NOC		1000-1	899-2	733-6	844-9	884-10				4360	8
Derek	Gale	DVO	60	832-1	887-2	801-3	847-7	745-9				4112	9
Michael	Lord	NOC		684-2	630-3	759-7	652-8	609-9	698-10			4032	0

Blue Course - Girls /Ladies

Alison	Hardy	LEI	40	1000-1	825-2	1000-4	779-5	1000-6	100-0-7	100-0-8	766-9	7370	1
Ursula	Williamson	LEI	45	871-1	670-2	769-3	863-4	722-5	699-9	694-10		5288	2
Fiona	Sellar	DVO	50	725-2	944-3	972-7	852-9	764-10				4257	3
Liz	Godfree	DVO	60	1000-2	1000-5	1000-9	1000-10					4000	4
Ro	Cole	DVO	45	745-2	1000-3	882-5	740-9					3367	5
Michelle	Mackervoy	DVO	35	763-2	886-3	780-10						2429	6
Joanne	Nell	RAFO	40	641-3	836-4	653-6						2130	7
Clare	Claxton	NOC	45	897-3	912-5							1809	8
Sarah	Claxton	NOC		971-3	826-9							1797	9
Laura	Evans	NOC		832-2	820-9							1652	0

Brown Course - Boys /Men

David	Bray	LEI	55	1000-1	880-2	845-3	1000-4	919-5	928-6	937-7	1000-8	7509	1
David	Lawson	DVO	45	994-1	903-2	914-3	925-4	903-5	940-8	849-10		6428	2
Ian	Wells	LEI	55	701-1	744-2	664-3	799-6	783-7	860-8	781-9	685-10	6017	3
Chris	Bosley	LEI	60	896-2	882-3	933-5	911-7	969-8				4591	4
Paul	Addison	DVO		998-5	1000-6	998-9	1000-10					3996	5
Ruedi	Billeter	NOC		1000-2	978-6	960-8	1000-9					3938	6
Nigel	Mockridge	NOC	45	943-1	972-2	778-3	949-7					3642	7
Tim	Cairns	NOC	40	570-1	540-3	625-5	607-7	564-9	556-10			3462	8
Mike	Whittaker	DVO		625-5	593-6	670-7	681-9	667-10				3236	9
Robert	McNab	RAFO		645-2	631-3	635-7	642-8	657-9				3210	0

Brown Course - Girls/Ladies

Ursula	Williamson	LEI	45	1000-6	1000-7	1000-8		3000	1
---------------	-------------------	------------	-----------	---------------	---------------	---------------	--	-------------	----------

Fixtures

This fixture list is intended to list all major events in the UK, and all East Midlands events. It includes all the information available to me about the event at the time of going to press. Unless otherwise stated, District events offer entry on the day (EOD) to a range of colour coded (C4) course with start times from 10:30 to 12:30. Local events (C5) will only have a limited range of courses. Regional and National events (C3 & C2) provide a range of age related courses and are normally entered in advance using a Standard Entry Form (SEF); entry on the day (EOD) will usually be limited and more expensive. Most will offer a limited number of colour-coded courses for EOD. Cheques payable to organising clubs given at beginning of details, if not specified.

The OS map reference is either the car park or point from which the event will be signposted. The list is based on BOF registration, but events are sometimes cancelled. If you are uncertain of whether an event will be on, check with the organiser. The editor takes no responsibility for wasted journeys.

October 2008

- | | | |
|------------------|-----|---|
| 12th | SW | WSX Regional Event, 20th Dorset Delight. Holmsley & Dur Hill, Bransgore. SU199000 . |
| | C3 | Organiser: Eric Whapples, 01202 330390. whapples@fsmail.net
Entries: Kay Sayer, 68 Kings Avenue, Christchurch, Dorset, BH23 1NB, 01202 484523.
k.sayer@ntlworld.com CD: 05/10/08. £10.00/£3.00. Lim EOD +£2.00. Chq: Wessex Orienteering Club. EPS-SI. White to Lt-Green, String course. Online entry will be available at www.oentries.com .
www.wessex-oc.org |
| 12th | EM | LEI District Event & East Midlands League. Charnwood Forest South, Loughborough. SK523118 . |
| | C4 | Laurie Fluck, 01509 503107. £7.00/£2.00. EPS-SI. Parking £1.00. Dogs allowed on Lead.
www.leioc.org.uk |
| 18th | EM | DVO Local Event. Markeaton Park, Derby. SK335370 . |
| | C5 | Val Johnson, 01773 824754. gmjandfam@aol.com £3.00/£1.00 Family entry: £7. www.dvo.org.uk |
| 19th | WM | OD Compass Sport Cup & Trophy Final. Sutton Park (Streetley Gate), Sutton Coldfield. SP087987 . |
| | O3 | Bob Brandon, 024-7650 5050. robertbrandon06@aol.com £8.00/£3.00. EPS-SI. Parking £1.00. SI punching (not Emit). NO EOD. www.octavian-droobers.org |
| 21 st | EM | LEI: Winter League Event: Burbage Common SP447953 (Visitor Centre Car Park) |
| | C5 | Organiser: to be confirmed: £3 / £1 Starts 11:00 – 12:00 |
| 26th | SOA | ESOC Regional Event & SOL 7 & Senior Home International. Craig a'Barns/Drumbuie, Dunkeld. NO005470 . |
| | C3 | Organiser: Mary Williams, 01383 860389. mflwilliams@yahoo.co.uk
Postal Entries: Anne Stevenson, 21 Orchard Road, Edinburgh, EH4 2EP, 0131 332 3045.
steve@compuserve.com CD: 18/10/08. £11.00/£4.00. CC - £8.50/£3.50. £2.00 less for Senior BOF members on all courses, inc. Colour-Coded. Lim EOD +£2.00/£1.00. Chq: ESOC. EPS-SI. String course. CC courses - Wh, Ye, Or, LG. Dogs must be kept on leads at all times. No dogs on the courses. Early times for SHI. Online entries via www.oentries.com preferred. www.esoc.org.uk |
| 26th | YH | EPOC Regional Event & YHOA Championships. Rishworth Moor, Halifax. SD991151 . |
| | C3 | Organiser: Dick Spendlove, 01422 832471. richcarla@tiscali.co.uk
Entries: Martyn Hodgson, Stonefield, Waters Road, Marsden, West Yorkshire, HD7 6NG, 01484 846889. preentries@eastpennineoc.org.uk CD: 15/10/08. £10.00/£2.50, Family £19.00. EOD + £1.00/50p. Chq: EPOC. EPS-SI. White to Light Green - £5.00/£2.00, String course. Parking £1.00. Dogs allowed on leads at all times. Online entries CD: 19/10/08. www.eastpennineoc.org.uk |

26th WM WCH District Event & WML League. Shoal Hill, Cannock. [SJ959123](#).
 C4 Ianka Petrova Evans, 01782 788341. ianka.evans@googlemail.com £7.00/£2.00 - BOF less £2 for adults. EPS-SI. Dogs on leads. SI card hire £1. www.walton-chasers.co.uk

November 2008

1st EM **LEI: Winter League Event: Knighton Park** SK606009
 C5 Organiser: to be confirmed £3 / £1 starts 10:30 – 12 noon

1st-2nd SOA **Tinto Twin Weekend**
 S3N **1st - Tinto Twin Night Score Event.** Lanark Racecourse and Loch, Lanark. [NS898429](#).
 S3 **2nd - Tinto Twin Day Event, Scottish Score Championships and Scottish Inter-Club Championships.** Rachan and Dreva, Broughton. [NT130370](#).
 Organiser: Marcella MacLennan, 01555 664165. marcella47@btinternet.com
 Entries: Lorna Young, 7 St Ninians, Lanark, ML11 7HX, 01555 661955. leyoung@talk21.com
CD: 23/10/08. £11.00/£4.00, £2.00 less for senior BOF members. Combined BOF member entry fees for both events: £17.00/£7.00. Lim EOD +£2.00/£1.00. Chq: Tinto Orienteering Club. EPS-SI. String course. Day 2 Parking £1.00. Day 1 - No dogs. Day 2 - Dogs on leads in car park only.

1st-2nd YH Yorkshire Pudding Weekend
 O4S 1st - Leeds City Chasing Sprint. The University of Leeds Campus, Leeds. [SE295346](#).
 C4N 1st - Night Event & Yorkshire Night League. Beckett Park, Leeds. [SE273365](#).
 C4S 2nd - Skipton Town Race. Skipton Town Centre, Skipton. [SD979518](#).
 Organiser: Martyn Broadest, 0113 2328982. martynATbroadest.org.uk
 Entries: Alan & Margaret Parker, 10 King Alfred's Drive, Leeds, LS6 4PS, 0113 2685764.
meparker@freenet.co.uk *CD: 26/10/08.* Sprint & Town Race: £6.50/£2.00, Night £8.00/£2.00 £2 discount for adult BO members. Discounts available for families and for entering all three Pudding events. Lim EOD +£1.00/£1.00. Chq: Airienteers. EPS-SI. Sprint Heats 11-12pm, Finals 2-3pm. Night starts 6-7.30pm. Dogs allowed on leads please. www.aire.org.uk

1st EM **LOG Local Winter Series Event. West Common, Lincoln.** [SK960717](#).
 C5 Sean Harrington, 01522 791344. Sean@logonline.org.uk £1.50/£1.50. Dogs allowed kept on Leads. www.logonline.org.uk

2nd SC **SOC Regional Event, November Classic.** Burley West, New Forest. [SU219042](#).
 C3 Organiser: Joe Parkinson, 023 8077 7939. jr.parkinson@btinternet.com
 Postal Entries: Terry Smith, Heath Cottage, North Road, Dibden Purlieu, Southampton, SO45 4RE, 02380 845787. terrysmith@compuserve.com *CD: Postal & online: 05/10/08.* £10.00/£4.00. Plus £1.00 Emit hire. Late entries online only by 19/10/08 +£2.00/50p. No EOD. Chq: SOC. EPS-Emit. String course. CC courses - W, Y O & LG. Parking £2.00. Entry limited to 1200. Online entries via www.ntrees.co.uk. www.southampton-orienteers.org.uk

2nd EM **NOC District Event. Bestwood, Nottingham.** [SK565475](#).
 C4 Catherine Hughes, 0115 8774089. Catherine@midlandsnordicwalking.org £7.00/£1.50, 65+ non-BOF £5.50. EPS-SI. String course. www.noc-uk.org

2nd EA WAOC Local Event. Warden Warren, Old Warden, Biggleswade. [TL139442](#).
 C5 Brian Williams, 01480 462426. £5.00/£2.00. EPS-SI. White to Green. Dogs allowed in car park on lead. www.waoc.org.uk

8th EA CUOC SprintO. Bromehill, Thetford. [TL823886](#).
 C5X Organiser: Roberto Zanchi, 07721677381. rz227@cam.ac.uk
 Entries: Victoria Stevens. *CD: 31/10/08.* Fees TBA. Lim EOD. Chq: Cambridge University Orienteering Club. Closed Inter-University club competition. No dogs. www.cuoc.org.uk

9th NW **MDOC Regional Event.** Crowden, Glossop. [SK072992](#).
 C3 Organiser: Alison Doyle, 0161 366 5175. crowden08@mdoc.org.uk
 Postal Entries: Julie Brook, 14 Leygate View, New Mills, High Peak, Derbyshire, SK22 3EF, 01663

EMEWS

		745020. Crowden08@mdoc.org.uk CD Postal: 28/10/08, CD Online: 31/10/08. £10.00/£3.00. EOD +£2.00 (Sen). Chq: MDOC. EPS-SI. String course. Lim CC courses - White to Light Green + Red - EOD £5.00/£3.00. Parking £1.00. Starts 1130 - 1300. Dogs on lead in car park/assembly only. Internet entry from website preferred. Assembly at YHA, opening new POC. www.mdoc.org.uk
9th	EM C4	LEI District Event & YBT Round. Bagworth Woodlands, Coalville. SK458067. Peter Hornsby, 01530 456066. mapping@lineone.net £7.00/£2.00. EPS-SI. Dogs on Leads. www.leioc.org.uk
9th	SW C3	NGOC Regional Event. Sallowvallets, Coleford, Glos. SO607116 . Organiser: Roger Coe, 01594 510444. randvcoe@btinternet.com Postal Entries: John Fallows, The Cottage, Comptons Alley, Tewkesbury, Glos, GL20 5QE. johnfallows@compuserve.com Postal CD: 25/10/08. Online CD: 29/10/08, Late: 05/11/08. £10.00/£3.00. Lim EOD +£2.00. Chq: NGOC. EPS-SI. W, Y & LG, String course. Dogs allowed on lead in parking and assembly. On line entry preferred at www.fabian4.co.uk , www.ngoc.org.uk
9th	YH C4	EBOR District Event. Skipwith Common, Selby. Peter & Dawn Watson, 01759 388269. £7.00/£2.50. EPS-SI. String course. Dogs allowed on lead and only in assembly area. www.eborienteers.org.uk
15th	EM C5	LOG Local Winter Series Event. Riseholme Park, Lincoln. SK981757. Sean Harrington, 01522 791344. Sean@logonline.org.uk £1.50/£1.50. Dogs allowed kept on Leads. www.logonline.org.uk
15 th	EM C5	LEI: Winter League Event: Brocks Hill Country Park SP619997 (Visitor centre of B582) Organiser: Roger Edwards 0116 212 7547 £3 / £1 starts 11 – 12 noon
16th	EM C3	DVO Regional Event. Shining Cliff, Belper. SK335522 . Organiser: Sal Chaffey, 01773 825418. dave.chaffey@zetnet.co.uk Postal Entries: Mike Godfree, Highfields, Mapleton Road, Ashbourne, DE6 2AA, 01335-346004. Mike.Godfree@btinternet.com CD (postal): 03/11/08, (online): 09/11/08. £10.00/£3.00 (inc Students). CC - £7.00/£1.00. Lim EOD +£2.00/£1.00. Chq: DVO. EPS-SI. String course. CC - W, Y, O, R. Dogs on lead, in car park. Entries preferred on-line via website: www.dvo.org.uk
22nd	SC C3N	BADO Southern Night Championships. Greenham Common, Newbury. SU500645 . Organiser: Andy MacGregor, 0118 981 2598. andy.macgregor@btinternet.com Entries: Andy MacGregor, 12 Douro Close, Baughurst, Tadley, Hants, RG26 5PG, 0118 981 2598. andy.macgregor@btinternet.com CD: 08/11/08. £8.00/£2.00. No EOD. Chq: BADO. EPS-Emit. No dogs. Senior Emit hire £1.00; there is no fee for Emit hire for Juniors. www.bado.org.uk
23rd	SE C3	CHIG "Michael Brandon" Mitre 2008 Regional Event. Broxbourne Woods, Hoddesdon. TL339067 . Organiser: Carol Pearce, 020 8504 3542. carolpearce@yahoo.co.uk Postal Entries: Derek Jenner, 19a Brook Road, Sawbridgeworth, Herts, CM21 9HA. derek1jenner@gmail.com CD: 15/11/08. £12.00/£4.00, less £2.00 BOF senior. Lim EOD +£2.00/£1.00. Chq: Chigwell and Epping Forest OC. Entries via www.Fabian4.co.uk preferred. EPS-SI. String course. CC courses - LG, O, Y, W. Parking £1.00. Dogs not allowed in Zoo, but OK elsewhere if under control. Event centre at PARADISE WILDLIFE PARK www.pwpark.com Free entry to Zoo and other attractions. www.chig.org.uk
26 th	EM C5N	LEI: Winter League Night Event: Fosse Meadows (parking close to village of Sharnford) Organiser; to be confirmed: Starts: 6:30 – 7:30pm
29th	EA C3N	WAOC Rowney Weekend Regional Night Event & Midland Night Championships. Rowney Warren, Ampthill. Ursula Oxburgh, 01223357199. uoxb00@esc.cam.ac.uk Fees TBA. EPS-SI. String course. Dogs allowed in car park on lead. www.waoc.org.uk <i>Full registration pending</i>

29th	EM C5	LOG Local Winter Series Event. North Kesteven School, Lincoln. SK938664 . Sean Harrington, 01522 791344. Sean@logonline.org.uk £1.50/£1.50. Dogs allowed kept on Leads. www.logonline.org.uk
30th	WM C3	WCH Regional Event. Brocton & Milford, Cannock. SJ973210 . Organiser: Pat Murray, 01538 266224. pat@ipstones37.freemove.co.uk Entries: TBC. <i>CD: unknown</i> . £11.00/£3.00, less £2.00 BOF adults. SI hire £1.00. EPS-SI. CC - White - Light Green. Colour coded entry £7 (less £2 for BOF members. Dogs on leads. www.walton-chasers.co.uk
30th	SE C3	SO Regional Event & SE League. Broadstone Warren, Forest Row. TQ431324 . Organiser: Bridget Hooper, 01342 322072. bridgethooper@btinternet.com Entries: Jaquie Drake, East Cottage, Vuggles Farm, Newick, East Sussex, BN8 4RU, 01273 400603. entries@vuggles.co.uk <i>CD: 16/11/08</i> . £10.00/£3.00 SO juniors free. Late entry + £1.50 on senior fees (no junior surcharge). Colour coded EOD only - seniors £7.00, juniors £3.00. Senior BOF members should deduct £2.00. Lim EOD + £3.00. Chq: "Southdowns Orienteers". EPS-SI. Light Green, Orange, Yellow & White, String course. Scout camp - no dogs allowed. SO 24-hr Ansaphone - recorded event information 01903-239186 On line entries at www.vuggles.co.uk/broadstone.htm . www.southdowns-orienteers.org.uk
30th	EA C4	WAOC Rowney Weekend District Event. Rowney Warren, Ampthill. Ursula Oxburgh, 01223357199. uoxb00@esc.cam.ac.uk £7.00/£2.00. EPS-SI. String course. Dogs allowed in car park on lead. www.waoc.org.uk

December 2008

7th	WM C3	HOC Regional Event. Postensplain, Wyre Forest, Bewdley. SO743791 . Organiser: Steve Chiverton, 01905 831184. stevechiverton@fsmail.net Entries: Mike Farrington, Postensplain 08, Oak Lodge, Floyds Lane, Wellington Heath, Ledbury, HR8 1NB, 01531 635502 (7 - 9 pm). postensplain08@harlequins.org.uk <i>CD: 21/11/08</i> . £11.00/£3.00 (up to 14/11/08), £13.00/£4.00 (Up to 21/11/08). No EOD. Chq: Harlequins Orienteering Club. EPS-SI. W, Y, O, Lt Gr & Red - £7.00/£2.00. String course. Parking £1.00. Dogs allowed on lead at all times in car park and assembly field. On Line Entries via www.fabian4.co.uk . www.harlequins.org.uk
13th	YH C4N	HALO Night Event & YHOA Night League. Primrose Warren, Scunthorpe. SE957065 . Neil Harvatt, 01302 772911. neil@neilharvatt1.orangehome.co.uk Fees TBA. EPS-SI. No dogs.
13th	EM C5	LOG Local Winter Series Event. Lincoln University, Lincoln. SK967711 . Sean Harrington, 01522 791344. Sean@logonline.org.uk £1.50/£1.50. Dogs allowed kept on Leads. www.logonline.org.uk
13 th	EM C5	LEI: Christmas Novelty Event: Sence Valley Organiser: to be confirmed
14th	YH C4	HALO District Event. Primrose Warren, Scunthorpe. SE957065 . Neil Harvatt, 01302 772911. neil@neilharvatt1.orangehome.co.uk Fees TBA. EPS-SI. No dogs.
14th	EM C4	DVO District Event. Whitesprings, Matlock. SK297645 . Ian Hodson, 01246 297394. sjblackburn@sky.com £7.00/£1.00 (inc Students), Family entry: £15. EPS-SI. String course. Dogs on lead, in car park. www.dvo.org.uk
21st	EM S4	NOC Score Event. Walesby, Mansfield. SK669702 . Catherine Hughes, 0115 8774089. Catherine@midlandsnordicwalking.org Fees TBA. EPS-SI. String course. www.noc-uk.org
28th	SE C3	SN Regional Event & SN Trophy. Long Valley North, Aldershot. SU852519 . Jane Archer. jane.archer7@ntlworld.com EPS-SI. www.SouthernNavigators.com <i>Full registration pending</i>
28th	EM	LEI District Event & East Midlands League. Beacon Hill, Leicester. SK510145 .

EMEWS

C4 Bob Haskins, 01509 842449. bobh@piperdrive.org.uk £7.00/£3.00. EPS-SI. Parking £2.00.
www.leioc.org.uk

January 2009

1st WM OD Laurie Bradley NYD Score Championships. Sutton Park (Hartopp Gate), Sutton Coldfield.
SP109972.

S4 John Bowman, 01926 853720. jandsbowman@yahoo.co.uk Fees TBA. EPS-Emit. Parking £1.00.
Full registration pending

1st EM **DVO Street-O. Melbourne, Nr Derby.** SK386252.

S5 Doug Dickinson, 01509 265653. doug@doug dickinson.co.uk £2.00/£1.00. Dogs allowed on leads at all times. 11.00 mass start. Event - 1 hour score. www.dvo.org.uk

3rd NW MDOC Annual Charity Event. Lyme Park, Disley. SJ964823.

S5 Sue Birkinshaw, 0161 980 5068. spring2008@mdoc.org.uk Free/Free Donations to charity. EPS-SI. Dogs allowed car park only. Mass start 11.30. John O'Goats Score event. www.mdod.org.uk

3rd EM **LOG Local Winter Series Event. Lincoln South Common, Lincoln.** SK977698.

C5 Sean Harrington, 01522 791344. Sean@logonline.org.uk £1.50/£1.50. Dogs allowed kept on Leads. www.logonline.org.uk

4th SE **SAX Regional Event.** Eridge.

C3 Jean Fitzgerald, 01622 686779. jean.fitzgerald@emr.ac.uk £9.00/£4.00. EPS-SI. Saxons 24 hour infoline on 01303 813344. www.saxons-oc.org
Full registration pending

17th YH **EBOR Night Regional Event & Northern Night Championships.** Gilling Woods, Helmsley.
SE583753.

C3N Steve Corrigan, 01904 766695. £8.00/£3.00. £2 discount for Senior BOF National and YHOA members. EPS-SI. Dogs on lead in assembly only. Parking £1.00. www.eborienteers.org.uk

17th EM **NOC Local Night Event. Shirebrook, Mansfield.** SK536665.

C5N Catherine Hughes, 0115 8774089. catherine@midlandsnordicwalking.org £2.00/£1.00. www.noc-uk.org

17th EM **LOG Local Winter Series Event. Hartsholme Country Park, Lincoln.** SK946697.

C5 Sean Harrington, 01522 791344. Sean@logonline.org.uk £1.50/£1.50. Dogs allowed kept on Leads. www.logonline.org.uk

24th SE **SN BRITISH NIGHT CHAMPIONSHIPS.** Mytchett & Congo Stream, Aldershot. SU924563.

C1N Organiser and entries: Steve McKinley, Paramali, Bagshot Road, Brookwood, Surrey, GU24 0EY, 01483 476914. BNOC2009@southern navigators.com CD: 11/01/09. £9.00/£4.50. Lim EOD +£2.00/£1.00. Chq: Southern Navigators. EPS-SI. Parking £1.00. Dogs on leads at all times.
www.southern navigators.com/bnoc2009

25th SC **BKO Regional Event, Concorde Chase.** Yateley Heath & Minley, Camberley. SU812585.

C3 Liz Yeadon, 01672 563840. liz.turbin@tiscali.co.uk Fees TBA. String course.
Full registration pending

25th EM **LOG Lincoln "City Race". The Lawn, Lincoln.** SK973719.

O4S Sean Harrington, 01522 791344. Sean@logonline.org.uk Fees TBA. EPS-SI. Dogs allowed kept on Leads.
Full registration pending

31st EM **DVO Local Event. Holmebrook, Chesterfield.** SK360730.

C5 Mike Godfree, 01335 346004. £3.00/£1.00 Family ent: £7. www.dvo.org.uk Full Registration Pending