

# EMEWS

THE NEWSLETTER  
of the  
EAST MIDLANDS ORIENTEERING ASSOCIATION

LATE SPRING – EARLY SUMMER 2026



**EMEWS EDITOR:**

Mike Gardner  
3 Gatcombe Close  
Oakwood  
Derby  
DE21 2PZ

Email: [mikegardvo@sky.com](mailto:mikegardvo@sky.com)

---

## EMEWS

---

*EMEWS is the newsletter of the East Midlands Orienteering Association. The views expressed in this newsletter are not necessarily those of the East Midlands Orienteering Association, nor of the Committee.*

East Midlands website: [www.emoa.org.uk](http://www.emoa.org.uk)

Copy Date for next issue: **1<sup>st</sup> July 2026 for next EMEWS**. Contributions are always welcome but especially by e-mail ([mikegardvo@sky.com](mailto:mikegardvo@sky.com)). I will then get the next edition out in mid July 2026.

Cover - Thanks again to Ernie Williams for the cover. It has been designed in recognition of the determination and optimism of the LEI Event Team that, having found a car park, albeit quite an expensive one, had to spend the days before the EML Event at Aylestone trusting that the waters would recede and that the Event could go ahead, though on the day those on the longest courses were warned that some route choices could find them getting very wet feet!

**Contents – EMEWS 301**

Notes from East Midlands Meeting - 27 <sup>th</sup> April 2026	3
East Midlands Junior Squad - February to April 2026 - Ann-Marie Duckworth	5
East Midlands Midland Champions	7
Allestree Hall and Park - History	7
East Midlands Urban League 2026	9
East Midlands League 2026	12
Puzzle Page	16
Fixtures	18

-----000-----

**Notes from East Midlands Meeting – 27<sup>th</sup> April 2026**

**EMOA Vice-Chair** – We still need a new vice-chair for EMOA. The role is not onerous but cannot be from DVO as we already have a DVO Chair, Development Officer and Secretary. Volunteers would be welcomed.

**Financial Secretary Report –**

The report covers 14 Jan to 15 Apr 2026:

**Income**

Membership fees continued to flow in, with £211 for January to March renewals being received.

Event levies were received for Matlock urban, Longshaw E.Mids Champs, Bow Woods/Lea Woods (DVO), Thieves Wood, Watchwood/Calverton (NOC), Aylestone Meadows (LEI) & Harlaxton (LOG) - £470 in total.

EMJOS receipts of £229 covered contributions for Cromford (including contributions from WMJOS and YHJS) and Watchwood & Calverton. The EMJOS cake sales at Longshaw also generated £235. Finally we received £45 in bank interest.

**Expenditure**

Payments were made for the plaques for the forest league winners and the biscuits for the urban league winners for 2025 totalling £189.

EMJOS costs paid were £158 for Cromford (including £125 for access), £48 for Watchwood & Calverton and £22 for a safeguarding course.

In addition, a transfer entry was recorded to allocate £800 from EMOA to EMJOS as per the budget as part of our commitment to fund EMJOS' activities.

Current bank balance = £14,466.

**Development –****Development Projects****Firm Applications for Funding**

- None currently in progress

---

## EMEWS

---

### Preliminary Applications of Interest

- DVO/25/1 - Club Development Officer new role - details still under discussion with DVO.

### Club-funded development projects

- DVO/26/1 - MapRuns 2026/27. DVO plan to hold 16 evening MapRun events in 2026/27 including a block of events in the Chesterfield area, with the aim of attracting new participants from running and other sporting clubs, and will be applying for a Sport England grant
- DVO/26/2 - Fun and memorable level D events 2026. This will be a series of 4 events in 6 weeks with prizes and other incentives in line with BO "Changing Perceptions" initiatives.
- DVO 26/3 - Another Navigation festival for newcomers at Hardwick on 11/7/2026 in partnership with the National Trust.
- NOC/26/1 - NOC have been holding an updated MapActive course comprising 3 sessions. Around 20 people signed up for it. There has been assistance from previous MapActive attendees, so the approach seems to be working and they would recommend all clubs consider this sort of approach.

**Development Day** - At present two courses are being considered for the autumn (a planners course and an organisers course). The intention is that they would be open to all EMOA members requiring them (and potential those from other regions). As these are the only 2 being considered, it is not planned to have a formal development training day this year.

John Hurley provided a summary of the sessions he had attended at the British Orienteering Development Conference and recommended the session on how to attract young adults (<https://www.youtube.com/watch?v=osJkxmROssY>). Ann-Marie also recommended the session on the Safety Advisory Group (<https://www.youtube.com/watch?v=XS8jfdR-5GI>).

**Coaching** - Hilary Palmer is still waiting for any clubs to request the new Orienteering Instructor Qualification for Clubs.

**EMJOS** - See report below.

**Fixtures** - The League and Urban League fixtures are covered separately in EMEWS.

- **Future Major Events**

- a. 10 Oct 2026 - British Schools Score Champs - DVO - Shipley Park
- b. 7 Feb 2027 - CompassSport Cup Heat - DVO - Stanton Moor (tbc)
- c. 5 Feb 2028 - British Night Champs - LEI - Irchester / Cademan / Wakerley
- d. 6 Feb 2028 - Midland Champs - LEI - Cademan / Wakerley
- e. 18 Oct 2028 - CompassSport Cup Final - LEI - Martinshaw extended
- f. 11 Nov 2028 - VHI Individual - DVO - Longshaw
- g. 12 Nov 2028 - VHI Relay - NOC

- **Future Possible Events**

- a. EMOA Champs 2027 (NOC scheduled to host)
- b. EMOA Champs 2028 (LOG scheduled to host)
- c. EMOA Champs 2029 (LEI scheduled to host)
- d. CompassSport Cup heat 2029 (LEI or LOG scheduled to host)
- e. JIRCS 2030
- f. EMOA Champs 2030
- g. Midland Champs 2031 (EMOA scheduled to host)

**Longshaw Event (East Midland Champs)** - At the DVO Longshaw EM Champs, the event suffered a fatality (which is the first at a DVO event in 55 years of putting events on). The club has been performing a lessons learned session and determined:

- 1) As far as can tell there was no fault in the organisation of the event
- 2) The competitor who died was a M65 with no club who had a heart condition and unfortunately had an incident in the forest
- 3) The club is putting together guidelines on providing early and comprehensive information about the nature of our events, allowing people to make an informed decision on taking part.

A number of LOG members had stated they were unhappy at the results standing for the EM Champs at Longshaw as their runs were impacted. However, the controller felt the results should stand and DVO received no formal complaint when the results were published.

**Qualification for the East Midlands Champs** - A proposal to change the eligibility for the East Midland Champs was discussed, which would allow members of closed clubs (educational establishments such as the universities) within the East Midlands to count in the results for the EM Championships (Note: members of other closed clubs like RAFO, BAOC assign themselves to a regions, so they are not covered by this proposal). After some discussion the proposal was agreed on a vote of 7:1. The rules for the EM Champs will be updated accordingly.

**Next Meeting** - The next EMOA Committee meeting will be via zoom on June 29<sup>th</sup> 2026. If anyone wants to attend the zoom call then please contact the secretary.

----000----

## **East Midlands Junior Squad - February to April 2026**

### **JROS Camps**

East Midlands has three juniors who have been nominated for JROS summer camps this year: Imogen Satherley (DVO) for the M/W14 Laganlia camp in Scotland, Eoin Simpson for Czechia M/W16 camp and Ellie Simpson for the Gothenberg M/W18. The selection criteria required championship selection race results or very good ranking position (Sweden tour). Well done and fingers crossed.

### **Training events**

---

## EMEWS

---

31st of January 2026 EMJOS hosted training on **Cromford Moor** (DVO area) for Yorkshire and Humberside and West Midlands squads - there was about 50 juniors at two very different ability levels, so the group split into two to allow the coaches to have good focus on the individual juniors' requirements from the exercises.

The training planning by Andy Simpson, was very challenging given the steep terrain and restrictions of fence crossing and bramble under growth. But with the additional coaches able to shadow and debrief after each loop, the juniors definitely had a physical workout on the steep slopes keeping their bearings when going up, along or down the contours.

The cake stall at East Midlands Championships 15<sup>th</sup> February raised over £180 - a miracle considering the cold conditions on the closed road carpark!

Training at **Watchwood and Calverton** (15<sup>th</sup> March) was made possible by doing it at the same time as the NOC event - thank you. Matt White (LEI coach) set a number of exercises to go over the fundamentals of race preparation (Start box focus, handicap start times on Light Green meant they were chasing the person in front), distance appreciation (step counting or time-passing), bearings between the gorse bushes and route planning/choice (direct or via a good attack point). The four juniors did appreciate the coaching and used the compass skills when running at the JK in Scotland a few weeks later.

Saturday 25<sup>th</sup> April we joined WMJS for training at **Bentley Woods** (bluebells in full glory). The six juniors practiced aiming off, setting bearings and holding the bearing through fairly good clear terrain. The highlight of the day was the Peg Relay - two courses (long 4.5km and short 3km) to match the variety of ability and stamina; there was a set of core controls that everyone had to visit- they had just 5 clothes pegs attached to the kite. The early runners would collect a peg but then have to run extra controls (+500m) before the next core control. If there was no peg, then the runner ran straight to the next core control - so the group came back together.

### Future Training

Our next training will be sprint format at **Warwick University (21<sup>st</sup> June)**, again exercises planned by Andy Simpson and teaming up with WMJS, who are under going a big shake up as their lead coach Kirsten Strain moves to Scotland.

The Junior Inter Regional Championships are this year in East Anglia (near Chelmsford) 26<sup>th</sup> & 27<sup>th</sup> September. So will have to look for an area for training early September that is not too over-run by bracken and nettles.

Early notice of the Orienteering Foundation November 2026 training - NGOC weekend 21<sup>st</sup>/22<sup>nd</sup> Nov to be held in the Forest of Dean; with night and regional events also planned.

JROS Hawkshead M/W15 (now to be at Grange-over Sands) end of November will be where EMJOS hopes to take 5 juniors for the weekend - most having never been on a camp/tour before.

Ann-Marie Duckworth (EMJOS coach and coordinator)

### East Midlands Midland Championships

The following are members from EMOA clubs who were in the top 3 in the Midland Championships on April 19<sup>th</sup> at Brown Clee.

M40S - Andrew Powell (DVO) - 1<sup>st</sup>

M45L - Richard Robinson (NOC) - 1<sup>st</sup>

M50L - Andy Simpson (LEI) - 1<sup>st</sup>

M55L - Richard Parkin (DVO) - 1<sup>st</sup>

M60L - John Duckworth (DVO) - 1<sup>st</sup>

M60S - Andy Sykes (DVO) - 1<sup>st</sup>

M70L - Graham Johnson (DVO) - 1<sup>st</sup>

M70S - Paul Armstrong (DVO) - 1<sup>st</sup>

M80S - John Palmer (NOC) - 1<sup>st</sup>

Apologies if I missed anyone.

W16A - Cara Tolley (LEI) - 1<sup>st</sup>

W18E - Ellie Simpson (LEI) - 1<sup>st</sup>

W21E - Aimee Darley (LUOC) - 1<sup>st</sup>

W40S - Emily Powell (DVO) - 1<sup>st</sup>

W45L - Toni O'Donovan (LEI) - 1<sup>st</sup>

W60L - Ann-Marie Duckworth (DVO) - 1<sup>st</sup>

W65L - Val Johnson (DVO) - 1<sup>st</sup>

-----000-----

### Allestree Hall and Park - History

DVO's next regional event will take place at Allestree Park in June, so a brief history of the hall and park might be of interest.

The Mundy family owned the Manor of Allestree from 1516 until Francis Noel Clarke Mundy sold it. Bache Thornhill bought the land in 1795 and demolished the house that stood there. He commissioned James Wyatt, the notable architect, to build the present Hall and the plans that were drawn up still exist. One stone in the building bears the date 1802 with the initials J. W. inscribed on it. The house begun by Bache Thornhill was completed by John Girardot (High Sheriff of Derbyshire) with three storeys and five bays, the central three bowed with an ionic



columned porch. Around 1818, the surrounding parkland was enclosed.

John Charles Girardot was born in 1771 into a French Huguenot family. His father was Andrew Girardot and his grandfather was Paul Girardot de Charcourt. He became his grandmother's heir in 1784 and was also an heir of his uncle. He lived at Allestree Hall for about 20 years and sold it to William Evans in 1824.

William Evans was one of the longest

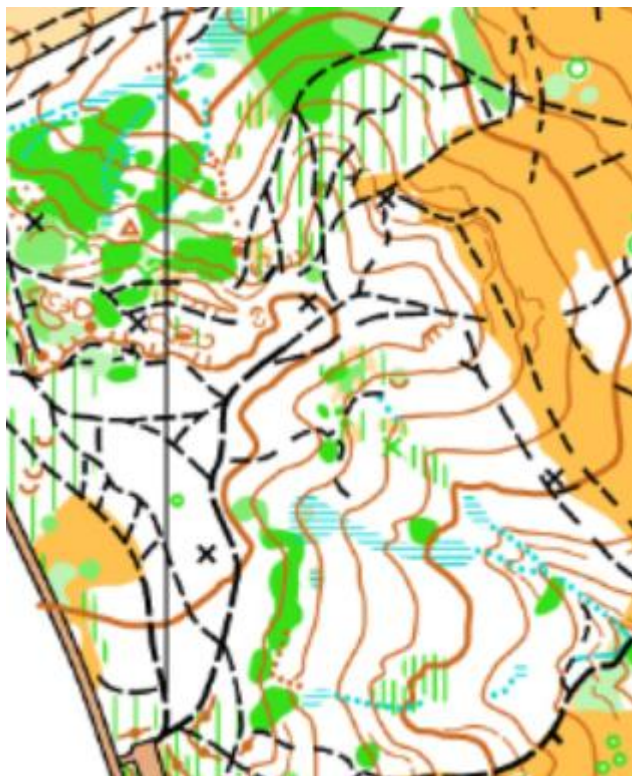
---

## EMEWS

---

residents of Allestree Hall. He lived there for about thirty years between 1824 until his death in 1856. He was born in 1788 in Derbyshire. His father, also called William Evans, was a very wealthy man. When he died William inherited a share in the Derby Bank, Darley cotton and paper mills, Derby waterworks and Bonsall lead smelting business. He was also lord of the manors of Brailsford, Alkinton, Parwich and Newton Grange. In 1820 he married Mary Gisborne who was the daughter of the notable clergyman Rev. Thomas Gisborne. The couple had only one child. William became a politician and was a known associate of William Wilberforce. He joined him in his fight against slavery. He and Wilberforce were both prominent members of the Anti-Slavery Society (1823-1838). A letter exists from William Evans to his sister which mentions that he has recently received correspondence from Wilberforce. William died at Allestree Hall in 1856 at the age of 68 and his only child Thomas William Evans inherited the property.

Thomas William Evans was born in 1821 at Allestree Hall. He was educated at Trinity College, Cambridge. After he graduated with a Master of Arts in 1846 he married his first cousin Mary Gisborne, the daughter of Thomas John Gisborne of Holme Hall near Bakewell. The couple had



no children. He inherited his father's fortune in 1856. He became a parliamentarian in 1857 and held this position for many years. He was also very prominent in local politics being the first Chairman of the Derbyshire County Council which was a position he held until his death. He was the Mayor of Derby in 1869 and was made a baronet in 1887. He died at Allestree Hall in 1892 and as he had no children he left the Hall to his brother-in-law William Gisborne.

The house was passed through the Gisborne family, though sometimes they rented it out to others, then in 1913 Lionel Gisborne sold the property to Colonel Herbert Johnson. He became owner of a major wire company on the death of his father, and consequently very wealthy, marrying in New York City, a wealthy American lady Ethyl Barnard. Herbert fought in World War I and was wounded,

and eventually returned to Allestree to recover. However, on the evening of Saturday 7 July 1923 when he was out in Allestree Park he was struck by lightning during a severe thunderstorm and died. His wife Ethyl continued to live at the Hall until her death in 1928.

The Hall was sold to Commercial Constructions Ltd around 1928. They subdivided part of the land and released it in



---

## EMEWS

---

1936. During the war the Hall was used by the National Fire Service as the County Headquarters. Derby Council purchased Allestree Hall in about 1946 and two years later constructed the golf course which surrounded the Hall until recently.

In the 1970s it was proposed that the Hall be demolished, but in the mid-1980s an outline scheme by the city's museums service to turn the building into a natural history museum was put forward. However, by 1988 the scheme to create a 'Derby Nature Museum' had been abandoned, and no further use was found for the building, which continued to deteriorate.

The park has currently been "rewilded" after closure of the golf course in 2020, and the current plan is to sell the Hall to a wedding venue operator.

-----000-----

### East Midlands Urban League 2026

The following is the current table for the EMOA Urban League 2026 which comprises of the following events:

- **EMUL 1** Monday 01 January: Matlock (DVO)
- **EMUL 2** Sunday 07 June: Nottingham University (TBC) (NOC) -UKUL 13
- **EMUL 3** Sunday 05 July: Swadlincote (DVO)
- **EMUL 4** Sunday 12 July: Hinckley (LEI) - UKUL 16
- **EMUL 5** Sunday 09 August: Southwell (NOC)
- **EMUL 6** Saturday 16 August Wellingborough (LEI)
- **EMUL 7** Sunday 23 August: Lincoln (LOG) - UKUL 18
- **EMUL 8** Sunday 11 October: Sleaford (LOG)

Your best 4 scores will count from the 8 events. Note: we have reverted to the original scoring system of counting all competitors.

Below is the current 2026 table showing the top 10 and omitting non-EMOA members.

#### Junior Men

	Name		Club	best 4	UL1	UL2	UL3	UL4	UL5	UL6	UL7	UL8

#### Junior Women

	Name		Club	best 4	UL1	UL2	UL3	UL4	UL5	UL6	UL7	UL8
1	Imogen Satherley	W14	DVO	<b>100</b>	100							
2	Elodie Booker	W10	NOC	<b>89</b>	89							

#### Open Men

	Name		Club	best 4	UL1	UL2	UL3	UL4	UL5	UL6	UL7	UL8
1	Chris Millard	M40	DVO	<b>91</b>	91							
2	Philip Johnston-Davis	M50	RAFO	<b>86</b>	86							
3	Miles Foord	M18	LEI	<b>82</b>	82							
4	Andy Nicholls	M50	LEI	<b>80</b>	80							
5	Austin Rolland	M21	DVO	<b>79</b>	79							

# EMEWS

6	Andrew Evans	M45	LOG	<b>76</b>	76							
---	--------------	-----	-----	-----------	----	--	--	--	--	--	--	--

## Open Women

	Name		Club	best 4	UL1	UL2	UL3	UL4	UL5	UL6	UL7	UL8
1	Sophie Vincent	W21	DVO	<b>100</b>	100							
2	Hannah Mather	W20	LOG	<b>91</b>	91							
3	Andrea Page	W50	LOG	<b>89</b>	89							
4	Jessica Williams	W18	DVO	<b>86</b>	86							

## Veteran Men

	Name		Club	best 4	UL1	UL2	UL3	UL4	UL5	UL6	UL7	UL8
1	Dai Bedwell	M55	DVO	<b>96</b>	96							
2	Rob Williams	M45	DVO	<b>90</b>	90							
3	Tim Booker	M45	NOC	<b>88</b>	88							
4	David Jolly	M50	RAFO	<b>87</b>	87							
5	Jake Warwick	M40	DVO	<b>86</b>	86							
6	David Foord	M50	LEI	<b>85</b>	85							
7	Ian Stevenson	M50	NOC	<b>83</b>	83							
8	David Sissons	M50	NOC	<b>82</b>	82							

## Veteran Women

	Name		Club	best 4	UL1	UL2	UL3	UL4	UL5	UL6	UL7	UL8
1	Tanya Taylor	W55	LOG	<b>100</b>	100							
2	Alison Foord	W50	LEI	<b>93</b>	93							
3	Emily Williams	W45	DVO	<b>91</b>	91							
4	Tracey Brookes	W60	LEI	<b>89</b>	89							
5	Katy Butterfield	W40	NOC	<b>88</b>	88							
6	Victoria Hanman	W40	NOC	<b>87</b>	87							
7	Janet Cain	W45	NOC	<b>86</b>	86							

## Senior Veteran Men

	Name		Club	best 4	UL1	UL2	UL3	UL4	UL5	UL6	UL7	UL8
1	Andrew Ridgway	M60	NOC	<b>90</b>	90							
2	Matt White	M55	LEI	<b>89</b>	89							
3	Ian Buxton	M60	LEI	<b>88</b>	88							
4	Alastair Paterson	M55	LEI	<b>86</b>	86							
5	Dave Chaffey	M60	DVO	<b>85</b>	85							
6	James Prince	M55	DVO	<b>84</b>	84							
7	John Mather	M55	LOG	<b>83</b>	83							
8	David Cladingboel	M60	LEI	<b>81</b>	81							
9	Murray White	M60	DVO	<b>80</b>	80							
10	Robert Orgill	M60	NOC	<b>78</b>	78							

---

# EMEWS

---

## Senior Veteran Women

	Name		Club	best 4	UL1	UL2	UL3	UL4	UL5	UL6	UL7	UL8
1	Sue Buxton	W60	LEI	<b>100</b>	100							
2	Michelle Mackervoy	W55	DVO	<b>96</b>	96							
3	Carol Stynes-Martin	W55	LEI	<b>93</b>	93							
4	Helen Parkinson	W60	NOC	<b>91</b>	91							
5	Alison Hardy	W60	LEI	<b>89</b>	89							
6	Sal Chaffey	W60	DVO	<b>88</b>	88							
7	Nicola Hart	W60	DVO	<b>87</b>	87							
8	Sue Russell	W60	DVO	<b>86</b>	86							
9	Louise Orgill	W55	NOC	<b>85</b>	85							
10	Ursula Williamson	W60	LEI	<b>84</b>	84							

## Ultravet Men

	Name		Club	best 4	UL1	UL2	UL3	UL4	UL5	UL6	UL7	UL8
1	Graham Johnson	M70	DVO	<b>100</b>	100							
2	David Vincent	M65	DVO	<b>96</b>	96							
3	Patrick Tranter	M65	RAFO	<b>91</b>	91							
4	John Hurley	M70	DVO	<b>90</b>	90							
5	Russell Buxton	M65	DVO	<b>87</b>	87							
6	Andrew Wallace	M65	NOC	<b>85</b>	85							
7	Stephen Martin	M65	LEI	<b>84</b>	84							
8	Ian Wells	M70	RAFO	<b>83</b>	83							
9	Stephen Kimberley	M65	DVO	<b>82</b>	82							
10	Jonathon Lee	M65	LEI	<b>80</b>	80							

## Ultravet Women

	Name		Club	best 4	UL1	UL2	UL3	UL4	UL5	UL6	UL7	UL8
1	Val Johnson	W65	DVO	<b>96</b>	96							
2	Jane Booker	W70	NOC	<b>91</b>	91							
3	Judith Evans	W70	DVO	<b>87</b>	87							
4	Elaine Smith	W70	NOC	<b>84</b>	84							
5	Maureen Webb	W70	LEI	<b>81</b>	81							
6	Viv Macdonald	W70	DVO	<b>78</b>	78							

## Hypervet Men

	Name		Club	best 4	UL1	UL2	UL3	UL4	UL5	UL6	UL7	UL8
1	Roger Edwards	M75	LEI	<b>96</b>	96							
2	Doug Dickinson	M80	DVO	<b>93</b>	93							
3	Kevin Gallagher	M75	LEI	<b>91</b>	91							
4	Patrick Squire	M75	NOC	<b>89</b>	89							
5	John Hopper	M75	DVO	<b>88</b>	88							
6	Derek Gale	M80	DVO	<b>87</b>	87							
7	Robert Haskins	M75	LEI	<b>85</b>	85							

## EMEWS

8	Rex Bleakman	M80	DVO	<b>84</b>	84							
9	Jeffrey Baker	M75	LOG	<b>83</b>	83							
10	Ian Parfitt	M75	DVO	<b>82</b>	82							

## Hypervet Women

	Name		Club	best 4	UL1	UL2	UL3	UL4	UL5	UL6	UL7	UL8
1	Judith Holt	W75	DVO	<b>100</b>	100							
2	Hilary Palmer	W75	NOC	<b>96</b>	96							
3	Diane Blount	W80	DVO	<b>90</b>	90							
4	Ruth Ellis	W75	DVO	<b>89</b>	89							
5	Sue Bicknell	W80	LEI	<b>87</b>	87							
6	Tricia Neal	W80	NOC	<b>85</b>	85							

-----000-----

## East Midlands League 2026

Below are the planned events for the EM League for 2026. With a total of 14 events, the best 8 scoring events count towards the league. Below are the current top tens for each colour based on at least 2 events counting.

The events included so far have been:

- 11<sup>th</sup> January - LEI - Cademan
- 18<sup>th</sup> January - NOC - Thieves Wood
- 8<sup>th</sup> February - LOG - Harlaxton Manor
- 8<sup>th</sup> March - LEI - Aylestone Meadows
- 15<sup>th</sup> March - NOC - Watchwood & Calverton
- 22<sup>nd</sup> March - DVO - Bow Woods & Lea Woods
- 26<sup>th</sup> April - LEI - Castle Hill

The events still to come are:

- 21<sup>st</sup> June - DVO - Allestree Park
- 27<sup>th</sup> September - DVO - Longstone Moor
- 1<sup>st</sup> November - LEI - QEDJW - tbc
- 15<sup>th</sup> November - NOC - Clumber Park North - tbc
- 22<sup>nd</sup> November - DVO - Linacre
- 6<sup>th</sup> December - LEI - Outwoods
- 20<sup>th</sup> December - NOC - Walesby

## White - Male

Name	Club	Age	1	2	3	4	5	6	7	8	9	10	11	12	13	14	Score	Pos
------	------	-----	---	---	---	---	---	---	---	---	---	----	----	----	----	----	-------	-----

## White - Female

Name	Club	Age	1	2	3	4	5	6	7	8	9	10	11	12	13	14	Score	Pos
Suranne Tolly	LEI	W10			1000	1000		577									2577	1
Elodie Booker	NOC	W10						1000	868								1868	2

## EMEWS

### Yellow - Male

Name	Club	Age	1	2	3	4	5	6	7	8	9	10	11	12	13	14	score	Pos
------	------	-----	---	---	---	---	---	---	---	---	---	----	----	----	----	----	-------	-----

### Yellow - Female

Name	Club	Age	1	2	3	4	5	6	7	8	9	10	11	12	13	14	score	Pos
Elodie Booker	NOC	W10		1000	967	1000	1000										3967	1
Lily Robinson	NOC	W10	1000	864				1000									2864	2
Suranne Tolley	LEI	W10	801						1000								1801	3
Thomasina Copcutt	NOC	W65				273	436	241	205								1155	4

### Orange - Male

Name	Club	Age	1	2	3	4	5	6	7	8	9	10	11	12	13	14	score	Pos
Ben Shambrook	DVO	M12	1000			1000		1000	1000								4000	1
Darwin Buxton	DVO	M12	943	1000					767								2710	2
Hugh Chester	LEI	M12			1000				785								1785	3
Reuben Terry	DVO	M16	642					459									1101	4

### Orange - Female

Name	Club	Age	1	2	3	4	5	6	7	8	9	10	11	12	13	14	Score	Pos
Dana Tolley	LEI	W40	1000		948	928		900	1000								4776	1
Sam Clements	NOC	W50			1000		1000	872									2872	2

### Light Green - Male

Name	Club	Age	1	2	3	4	5	6	7	8	9	10	11	12	13	14	Score	Pos
Neil Milsom	NOC	M55	847	755			854	777	684								3917	1
Michael May	LOG	M14		878	1000	1000		890									3768	2
Bodie Milson	NOC	M16	782	768			925	1000									3475	3
Alan Blackwell	NOC	M50		601		589	655	528	627								3000	4
Patrick Cain	NOC	M55		800	756		523										2079	5
Aidan Chester	LEI	M16			942				1000								1942	6
Kevin King	NOC	M65	1000	877													1877	7
Peter Brookes	NOC	M65		1000			872										1872	8
Peter Jennings	LOG	M60						909	845								1754	9

### Light Green - Female

Name	Club	Age	1	2	3	4	5	6	7	8	9	10	11	12	13	14	Score	Pos
Tina Brindley	NOC	W60		774	1000	1000	752	803	636								4965	1
Grace Robinson	NOC	W14		1000				1000	1000								3000	2
Emma Donson	NOC	W45		708			850	793									2351	3
Janet Cain	NOC	W45		916	905												1821	4

### Very Short Green - Male

Name	Club	Age	1	2	3	4	5	6	7	8	9	10	11	12	13	14	score	Pos
Ernie Williams	LEI	M80			1000	641	867	654	882								4044	1
Laurie Fluck	LEI	M75			934	544			910								2388	2
Peter Leake	LEI	M85		830		590	755										2175	3
Donald Moir	LEI	M90					1000	858									1858	4

# EMEWS

Simon Ford	LEI	M80					727			1000								1727	5
------------	-----	-----	--	--	--	--	-----	--	--	------	--	--	--	--	--	--	--	------	---

## Very Short Green - Female

Name	Club	Age	1	2	3	4	5	6	7	8	9	10	11	12	13	14	score	Po
Sue Bicknell	LEI	W80	1000	1000	903	783	880	1000									5566	1
Margaret Keeling	DVO	W75			1000		869	725									2594	2
Maureen Webb	LEI	W70	670		824	758											2252	3
Jan Ellis	NOC	W75	748			1000											1748	4
Tricia Neal	NOC	W80		787		572											1359	5

## Short Green - Male

Name	Club	Age	1	2	3	4	5	6	7	8	9	10	11	12	13	14	scores	Pos.
Dave Skidmore	DVO	M80	690	757	917	864	858	707	810								5603	1
Doug Dickinson	DVO	M80		928	964	652	727	813	978								5062	2
Roger Edwards	LEI	M75	938		1000	1000	1000	1000									4938	3
Peter Chick	LEI	M80	792	853	706	879		795	821								4846	4
Chris Bosley	LEI	M75	1000	740	733	799	703	617									4592	5
Kevin Gallagher	LEI	M75	740	802		770	885		1000								4197	6
Robert Titterington	LEI	M80		776	874	763	598		777								3788	7
Andrew Middleton	DVO	M75	980	1000				844	829								3653	8
Derek Gale	DVO	M80	845		872			820	878								3415	9
John Palmer	NOC	M80	557	744	750		691		663								3405	10

## Short Green - Female

Name	Club	Age	1	2	3	4	5	6	7	8	9	10	11	12	13	14	score	P
Ruth Ellis	DVO	W75	867	683	1000	1000	624		812								4986	1
Judith Holt	DVO	W75		1000			900	777	1000								3677	2
Christine Middleton	DVO	W80	1000	756				851	762								3369	3
Jane Booker	NOC	W70					1000	971	913								2884	4
Elaine Smith	NOC	W70		642			831	1000									2473	5
Trudy Crosby	LOG	W65		648	937	879											2464	6
Karen Bedwell	DVO	W55		423	653	765											1841	7
Ann Armistead	DVO	W75		683				772									1455	8
Jane Dring-Morris	LEI	W55			666			699									1365	9
Felicity Manning	LEI	W70		646					614								1260	10

## Green - Male

Name	Club	Age	1	2	3	4	5	6	7	8	9	10	11	12	13	14	scores	P
John Hopper	DVO	M75	669	893	835	783	809	1000	982								5971	1
Murray White	DVO	M60	823	858	862	852	701	855	857								5808	2
John Marriott	LEI	M75	853	870	677	828	768	856	894								5746	3
Stephen Martin	LEI	M65	479	830	1000	1000	803		978								5090	4
Mike Gardner	DVO	M65	647		842	868	674	877	782								4690	5
Russell Buxton	DVO	M65	675	873	821	663			827								3859	6
Andrew Wallace	NOC	M65		714	615	724	579	688									3320	7

## EMEWS

Vic Knight	NOC	M65		531		528	505	628	621									2813	8
Andy Portsmouth	LEI	M70			653	698	691		733									2775	9
Jacob Miles	LEI	M18		525	798			682	688									2693	10

### Green - Female

Name	Club	Age	1	2	3	4	5	6	7	8	9	10	11	12	13	14	scores	Pos
Judith Evans	DVO	W70		925		775	954	976	987								4617	1
Cara Tolley	LEI	W16	838	831	736	584		781	794								4564	2
Kim Buxton	DVO	W65	1000	760	883	728			930								4301	3
Amanda Roberts	LOG			1000	993	1000		1000									3993	4
Ursula Williamson	LEI	W60	824	634			753	669	751								3631	5
Alison Hardy	LEI	W60	828		1000		940										2768	6
Carol Stynes-Martin	LEI	W55				898	721		858								2477	7
Emily Williams	DVO	W45	614		624	466	640										2344	8
Tracey Brookes	LEI	W60		795	678				762								2235	9
Susan Buxton	LEI	W60	965				1000										1965	10

### Blue - Male

Name	Club	Age	1	2	3	4	5	6	7	8	9	10	11	12	13	14	scores	Pos
Toby Miles	LEI	M55	931	784	867	850	771		905								5108	1
James Prince	DVO	M55	938	643		820	787	884	848								4920	2
Dai Bedwell	DVO	M55	976	867	1000	999	1000										4842	3
Ian Wells	RAFO	M70	703	636	780	896	759	875									4649	4
Ian Buxton	LEI	M60	977		914		754	818	963								4426	5
Alastair Paterson	LEI	M55	722	683		861	601	705	850								4422	6
Tony Donaldson	NOC	M55		731	876	951	749	912									4219	7
Andrew Ridgway	NOC	M60	935		729	833	780	833									4110	8
Tom Hartland	DVO	M50	908	685		775		788	811								3967	9
David Cladingboel	LEI	M60		634	844	938	564		925								3905	10

### Blue - Female

Name	Club	Age	1	2	3	4	5	6	7	8	9	10	11	12	13	14	score	Pos
Tanya Taylor	LOG	W55	925	1000	1000	1000	1000		1000								5925	1
Sal Chaffey	DVO	W60	1000	892	716	929		1000	961								5498	2
Nicola Hart	DVO	W60	670			795	894	745	770								3874	3
Alison Foord	LEI	W50			591	641	744	671	653								3300	4
Victoria Hanman	NOC	W40		424	470	582	651		604								2731	5
Sally Calland	DVO	W50		761		927			965								2653	6
Katy Butterfield	NOC	W40	382	478		545	584	584									2573	7
Helen Chiswell	DVO	W45		743			941		813								2497	8
Catherine Hughes	NOC	W55				961	926										1887	9
Jo White	LEI	W50				682	780										1462	10

---

# EMEWS

---

## Brown - Male

Name	Club	Age	1	2	3	4	5	6	7	8	9	10	11	12	13	14	score	Pos
Tim Booker	NOC	M45		600	951	755	695	656	724								4381	1
Andy Nicholls	LEI	M50	915		1000	942	603		857								4317	2
Dave Foord	LEI	M50			873	722	529	565	723								3412	3
Chris Tolley	LEI	M45		561	853	621		470	635								3140	4
Steve Chafer	LEI	M55	1000			802			810								2612	5
Craig Lucas	LOG	M21		621	864		555	537									2577	6
Richard Robinson	NOC	M45						1000	1000								2000	7
Richard Parkin	DVO	M55		1000				942									1942	8
Roger Phillips	LEI	M50	823						743								1566	9
Rob Williams	DVO	M45				738	526										1264	10

## Brown - Female

Name	Club	Age	1	2	3	4	5	6	7	8	9	10	11	12	13	14	Score	Pos
Emily Bass	DVO	W40		1000	1000												2000	1

----000---

## Puzzle Page

Answer to EMEWS Puzzle 300.

The vacant house was no 9.

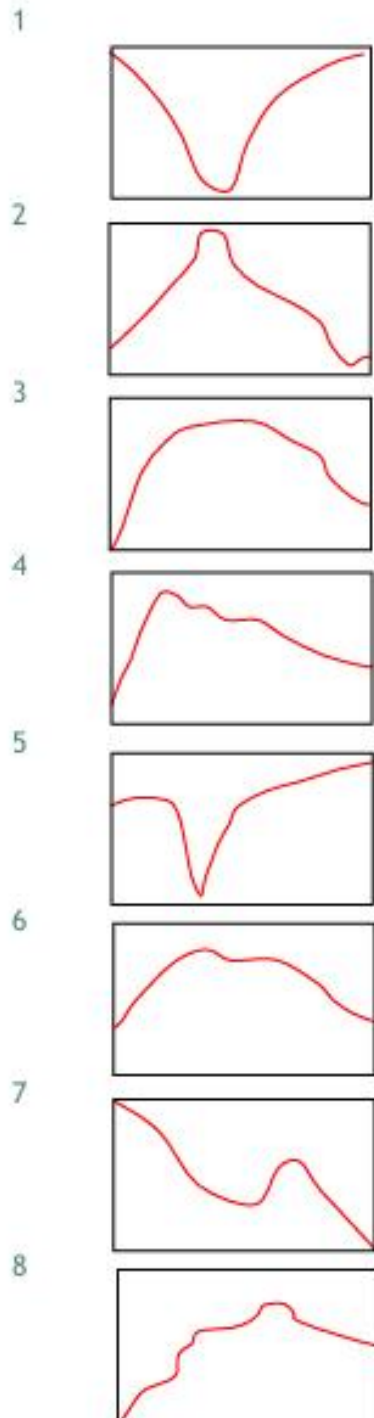
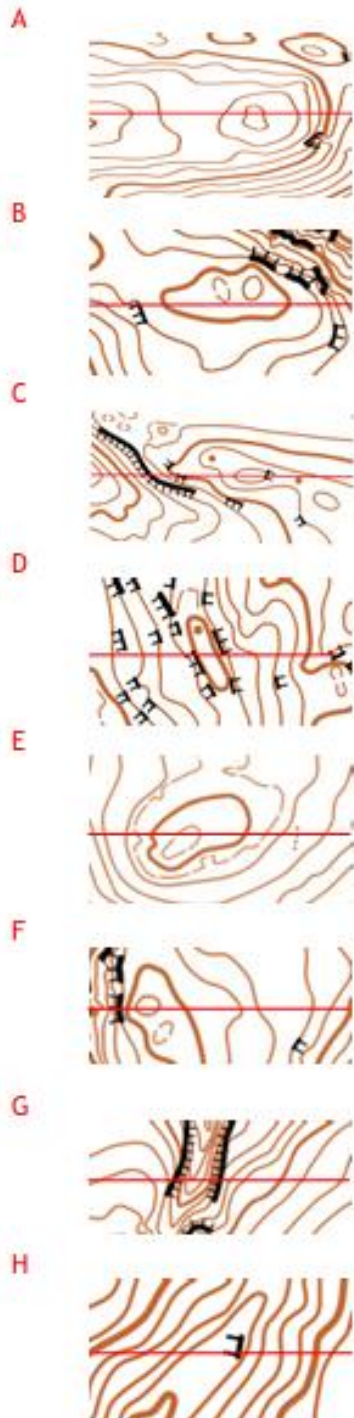
The NOC houses could be 1 and 2, 3 and 6 or 5 and 10.

The DVO houses can only be 1, 2 and 6, which means the NOC houses must be 5 and 10.

The 3 LOG houses are 3, 8 and 11, leaving 4 and 7 (=11) or 3 and 8 (=11) respectively for the LEI houses. Number 9 is left out.

This month's puzzle is pinched from SOA and involves contours:

Match the cross section marked with the red line on the contour diagrams to the correct sketch of the profile shape on the right.



-----000-----

## Fixtures

This fixture list is intended to list all major events in the UK, and all East Midlands events. It includes all the information available to me about the event at the time of going to press. Details on entry are normally available on the club sites. Unless otherwise stated, Local events offer entry on the day (EOD) to a range of colour coded courses with start times from 10:30 to 12:30. Some will provide a wider range of courses than others. Regional events provide colour coded within which age classes can be run. National events provide a range of age-related courses and are normally entered in advance.

The OS map reference is either the car park or point from which the event will be signposted. The list is based on BOF registration, but events are sometimes cancelled. If you are uncertain of whether an event will be on, check with the organiser. The editor takes no responsibility for wasted journeys.

**Many events are pre-entry only, so please check the event details before travelling.**

### May 2026

Sat 9 <sup>th</sup>	Burton Dassett Country Park Local Summer Event	Loc	<a href="#">OD</a>	WM	<a href="#">Burton Dassett Country Park</a>	Southam	
Sun 10 <sup>th</sup>	SYO Regional Event	Reg	<a href="#">SYO</a>	YH	<a href="#">Eckington Woods</a>	Sheffield	
Tue 12 <sup>th</sup>	<b>Beacon Hill SL 5 WOW</b>	Loc	<a href="#">LEI</a>	EM	<a href="#">Lower car park off Breakback Road</a>	Loughborough	<a href="#">SK522148</a>
Wed 13 <sup>th</sup>	<b>Poacher Spring Series #7</b>	Loc	<a href="#">LOG</a>	EM	<a href="#">Londonthorpe Woods</a>	Grantham	<a href="#">SK945379</a>
Sat 16 <sup>th</sup>	Tunstall Park	Loc	<a href="#">POTOC</a>	WM	<a href="#">Victoria park tunstall</a>	Tunstall	
Sat 16 <sup>th</sup>	Coombe Park Local event including WM Schools Championships	Loc	<a href="#">OD</a>	WM	<a href="#">Coombe Abbey</a>	Coventry	
Sat 16 <sup>th</sup>	<b>Chaddesden Park Local Event</b>	Loc	<a href="#">DVO</a>	EM	<a href="#">Chaddesdon Park</a>	Derby	<a href="#">SK379036</a>
Sat 16 <sup>th</sup>	Saturday Series 8	Loc	<a href="#">SYO</a>	YH	<a href="#">Graves Park</a>	Sheffield	
Sat 16 <sup>th</sup>	<b>MapActive session 3</b>	Act	<a href="#">NOC</a>	EM	<a href="#">Bramcote Hills Park</a>	Nottingham	
Wed 20 <sup>th</sup>	Lincs Poacher 8 Spring Series - Swallow Vale	Loc	<a href="#">HALO</a>	YH	Swallow Vale	Caistor	TA169040
Thu 21 <sup>st</sup>	<b>Outwoods SL 6</b>	Loc	<a href="#">LEI</a>	EM	<a href="#">Woodland car park off Woodhouse Road</a>	Loughborough	<a href="#">SK514159</a>
Sat 23 <sup>rd</sup>	Scottish Championships Individual (UKOL)	Natl	<a href="#">STAG</a>	SOA	<a href="#">Grandtully</a>	Pitlochry	<a href="#">NN924532</a>
Sat 23 <sup>rd</sup>	Manchester in May; urban weekend – Middle NWUL	Reg	<a href="#">MDOC</a>	NW	<a href="#">Central Manchester - Beswick area</a>	Manchester	
Sat 23 <sup>rd</sup>	Canterbury City Race, City Race Euro Tour, UKUL	Natl	<a href="#">SAX</a>	SE	<a href="#">Canterbury</a>	Canterbury	
Sun 24 <sup>th</sup>	Manchester in May; urban weekend – Long UKUL and NWUL	Natl	<a href="#">MDOC</a>	NW	<a href="#">Central Manchester - Castlefield and the Irwell</a>	Manchester	<a href="#">SJ832977</a>
Mon 25 <sup>th</sup>	Manchester in May; Urban weekend – Knockout Sprint	Loc	<a href="#">MDOC</a>	NW	<a href="#">Central Manchester, Miles Platting</a>	Manchester	
Tue 26 <sup>th</sup>	<b>Donisthorpe SL 7</b>	Loc	<a href="#">LEI</a>	EM	<a href="#">Moira car park</a>	Leicester	<a href="#">SK311153</a>
Wed 27 <sup>th</sup>	<b>Poacher Spring Series #9 + Lincs Challenge Shield</b>	Loc	<a href="#">LOG</a>	EM	<a href="#">Riseholme Park</a>	Lincoln	<a href="#">SK982756</a>

## EMEWS

Sat 30 <sup>th</sup>	Eyes Meadow Local Event	Loc	<a href="#">DVO</a>	EM	<a href="#">Eyes Meadow</a>	Derby	<a href="#">SK344434</a>
----------------------	-------------------------	-----	---------------------	----	-----------------------------	-------	--------------------------

### June 2026

Wed 3 <sup>rd</sup>	Leicester Urban SL 8	Loc	<a href="#">LEI</a>	EM	<a href="#">Clock Tower, Leicester</a>	Leicester	<a href="#">SK587046</a>
Wed 3 <sup>rd</sup>	Lincs Poacher 10 Spring Series - Kingsway	Loc	<a href="#">HALO</a>	YH	Kingsway	Scunthorpe	SE876110
Thu 4 <sup>th</sup>	MDOC Summer evening 1	Loc	<a href="#">MDOC</a>	NW	<a href="#">Teggs Nose Country Park</a>	Macclesfield	<a href="#">SJ949732</a>
Sat 6 <sup>th</sup>	Darley Park Local Event	Loc	<a href="#">DVO</a>	EM	<a href="#">Darley Park</a>	Derby	<a href="#">SK353384</a>
Sun 7 <sup>th</sup>	East Midlands Urban League 2026	Reg	<a href="#">NOC</a>	EM	<a href="#">University of Nottingham</a>	Nottingham	
Wed 10 <sup>th</sup>	LUL 1 Scunthorpe	Loc	<a href="#">HALO</a>	YH	<a href="#">Scunthorpe</a>	Scunthorpe	
Thu 11 <sup>th</sup>	Markfield Urban SL 9	Loc	<a href="#">LEI</a>	EM	<a href="#">Car park off Hill Lane TBC</a>	Leicester	
Fri 12 <sup>th</sup>	Melton & South Charnwood Primary schools	Loc	<a href="#">LEI</a>	EM		Grantham	
Sat 13 <sup>th</sup>	SYO Urban Weekend	Reg	<a href="#">SYO</a>	YH	Stannington	Sheffield	
Sat 13 <sup>th</sup>	WMUL Event - Worcester	Reg	<a href="#">HOC</a>	WM	Worcester	Worcester	
Sun 14 <sup>th</sup>	SYO Urban Weekend	Reg	<a href="#">SYO</a>	YH	Sheffield City SW	Sheffield	
Sun 14 <sup>th</sup>	UKUL (and NGOC league)	Reg	<a href="#">NGOC</a>	SW	<a href="#">Gloucester City</a>	Gloucester	<a href="#">SO825181</a>
Tue 16 <sup>th</sup>	Leicester Forest East Urban SL 10	Loc	<a href="#">LEI</a>	EM		Leicester	
Wed 17 <sup>th</sup>	Lincs Urban League #2	Loc	<a href="#">LOG</a>	EM	<a href="#">Horncastle</a>	Horncastle	
Sat 20 <sup>th</sup>	Florence and Longton parks	Loc	<a href="#">POTOC</a>	WM		Longton	<a href="#">st910418</a>
Sun 21 <sup>st</sup>	HALO Gainsborough Sprint plus Relay	Reg	<a href="#">HALO</a>	YH	Gainsborough	Gainsborough	
Sun 21 <sup>st</sup>	EMOA League 2026 Allestree Park	Reg	<a href="#">DVO</a>	EM	<a href="#">Allestree Park</a>	Derby	<a href="#">SK352408</a>
Sat 27 <sup>th</sup>	British Sprint Relay Championships	Maj	<a href="#">BOK</a>	SW	<a href="#">University of Bristol North Village</a>	Bristol	<a href="#">ST568757</a>
Sun 28 <sup>th</sup>	British Sprint Championships	Maj	<a href="#">BOK</a>	SW	<a href="#">University of the West of England</a>	Bristol	

### July 2026

Wed 1 <sup>st</sup>	Lincs Urban League #4	Loc	<a href="#">LOG</a>	EM	<a href="#">Boston</a>	Boston	<a href="#">SK587046</a>
Thu 2 <sup>nd</sup>	Shephed Urban SL 12	Loc	<a href="#">LEI</a>	EM		Shephed	<a href="#">SK478196</a>
Sat 4 <sup>th</sup>	EPOC Urban weekend: Meltham	Reg	<a href="#">EPOC</a>	YH	Meltham	Huddersfield	
Sun 5 <sup>th</sup>	EPOC Urban: Huddersfield University	Reg	<a href="#">EPOC</a>	YH	Huddersfield University	Huddersfield	
Sun 5 <sup>th</sup>	EMUL 2026 Swadlincote	Reg	<a href="#">DVO</a>	EM	<a href="#">TBC</a>	Swadlincote	<a href="#">SK305193</a>
Tue 7 <sup>th</sup>	Loughborough Fairmeadows Urban SL 13	Loc	<a href="#">LEI</a>	EM		Loughborough	<a href="#">SK478196</a>
Wed 8 <sup>th</sup>	Daventry NE Local Summer MapRun Event	Loc	<a href="#">OD</a>	WM	Daventry NE	Daventry	
Thu 9 <sup>th</sup>	Biddulph grange park -- Thursday evening event	Loc	<a href="#">POTOC</a>	WM	<a href="#">biddulph grange country park</a>	Biddulph	<a href="#">sj893594</a>
Sun 12 <sup>th</sup>	Hinckley Urban (Joint OD/LEI event) UKUL/EMUL	Reg	<a href="#">OD</a>	WM	<a href="#">Hinckley</a>	Hinckley	
Wed 15 <sup>th</sup>	Birstall North Urban SL 14	Loc	<a href="#">LEI</a>	EM		Leicester	
Wed 15 <sup>th</sup>	Lincs Urban League #6	Loc	<a href="#">LOG</a>	EM	<a href="#">Sudbrooke</a>	Lincoln	

## EMEWS

Sun 19 <sup>th</sup>	Telford Urban Twin Event - UKUL Event	Reg	<a href="#">WRE</a>	WM	<a href="#">Woodside</a>	Telford	
Thu 23 <sup>rd</sup>	Groby Urban SL 15	Loc	<a href="#">LEI</a>	EM		Leicester	
Sat 25 <sup>th</sup>	Wolds Mini Mountain Marathon	Loc	<a href="#">LOG</a>	EM	Raithby	Spilsby	
Tue 28 <sup>th</sup>	Castle Hill SL 16	Loc	<a href="#">LEI</a>	EM		Leicester	

## August 2026

Sun 2 <sup>nd</sup>	Lakes 5 Days - Day 1	Natl		NW		Lake District	
Mon 3 <sup>rd</sup>	Lakes 5 Days - Day 2	Natl		NW		Lake District	
Tue 4 <sup>th</sup>	Lakes 5 Days - Day 3	Natl		NW		Lake District	
Thu 6 <sup>th</sup>	Lakes 5 Days - Day 4	Natl		NW		Lake District	
Fri 7 <sup>th</sup>	Lakes 5 Days - Day 5	Natl		NW		Lake District	
Sun 9 <sup>th</sup>	East Midlands Urban League 2026	Reg	<a href="#">NOC</a>	EM	Southwell	Nottingham	
Wed 12 <sup>h</sup>	Hamilton SL 17	Loc	<a href="#">LEI</a>	EM		Leicester	
Sat 15 <sup>th</sup>	Milton Keynes Urban and Keyne-O 3, MK South West	Reg	<a href="#">SMOC</a>	EA		Milton Keynes	
Sun 16 <sup>th</sup>	EMUL 2026 Wellingborough	Reg	<a href="#">LEI</a>	EM	Wellingborough	Wellingborough	
Sun 16 <sup>th</sup>	score and bbq	Loc	<a href="#">POTOC</a>	WM	<a href="#">Parkhall country park ---Tbc</a>	Longton	
Tue 18 <sup>th</sup>	Tunnel Woods LEI Score Cup and Presentations	Loc	<a href="#">LEI</a>	EM	<a href="#">Tunnel Woods</a>	Swadlincote	<a href="#">SK298173</a>
Sun 23 <sup>rd</sup>	EMUL 2026 Lincoln + UKUL	Reg	<a href="#">LOG</a>	EM	Lincoln	Lincoln	
Wed 26 <sup>th</sup>	Atherstone Local Summer MapRun Event	Loc	<a href="#">OD</a>	WM	Atherstone Town	Atherstone	
Sat 29 <sup>th</sup>	White Rose	Natl	<a href="#">EBOR</a>	YH		N. Yorkshire	
Sun 30 <sup>th</sup>	White Rose	Natl	<a href="#">EBOR</a>	YH		N. Yorkshire	

## September 2026

Sat 5 <sup>th</sup>	Northern Championships (UKOL)	Natl	<a href="#">EPOC</a>	YH	<a href="#">Langfield Common</a>	Todmorden	
Sun 6 <sup>th</sup>	YHOA Middle Champs & YHOA SuperLeague (UKOL)	Reg	<a href="#">EPOC</a>	YH	<a href="#">Langfield Common</a>	Todmorden	
Sun 6 <sup>th</sup>	Warwick University Local Event	Loc	<a href="#">OD</a>	WM	<a href="#">Warwick University</a>	Coventry	
Sat 12 <sup>th</sup>	Dales Weekend	Natl	<a href="#">AIRE</a>	YH	<a href="#">Attermire</a>	Settle	
Sat 12 <sup>th</sup>	Ladderedge country park	Loc	<a href="#">POTOC</a>	WM		Leek	<a href="#">sj972551</a>
Sun 13 <sup>th</sup>	Dales Weekend & YHOA SuperLeague & YHOA Champs	Natl	<a href="#">AIRE</a>	YH	<a href="#">Conistone</a>	Skipton	
Sun 13 <sup>th</sup>	WCH Urban Event	Reg	<a href="#">WCH</a>	WM	<a href="#">Lichfield</a>	Lichfield	
Sat 19 <sup>th</sup>	SLOW City of London Race (UKOL)	Natl	<a href="#">SLOW</a>	SE	tba	London	
Sun 20 <sup>th</sup>	HALO Urban Event	Reg	<a href="#">HALO</a>	YH		Humberside	
Sun 20 <sup>th</sup>	DFOK Double Sprints (London City Race (UKOL))	Natl	<a href="#">DFOK</a>	SE	<a href="#">Thamesmead</a>	Woolwich	
Sun 27 <sup>th</sup>	EMOA League 2026 Longstone Moor	Reg	<a href="#">DVO</a>	EM	<a href="#">Longstone Moor</a>	Bakewell	<a href="#">SK197737</a>
Sun 27 <sup>th</sup>	Hartshill Hayes Local Event	Loc	<a href="#">OD</a>	WM	Hartshill Hayes CP	Atherstone	